

Recombinant Human Complement Component C8 Gamma Chain/C8G Protein (His Tag)



Catalog Number:PKSH032271

Note: Centrifuge before opening to ensure complete recovery of vial contents.

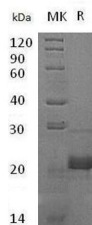
Description

Synonyms	Complement component C8 gamma chain;C8G
Species	Human
Expression Host	E.coli
Sequence	Gln21-Arg202
Accession	AAI13627.1
Calculated Molecular Weight	22.6 kDa
Observed molecular weight	22 kDa
Tag	N-His

Properties

Purity	> 95 % as determined by reducing SDS-PAGE.
Endotoxin	< 1.0 EU per µg of the protein as determined by the LAL method.
Storage	Store at < -20°C, stable for 6 months. Please minimize freeze-thaw cycles.
Shipping	This product is provided as liquid. It is shipped at frozen temperature with blue ice/gel packs. Upon receipt, store it immediately at < - 20°C.
Formulation	Supplied as a 0.2 µm filtered solution of 20mM PB, 150mM NaCl, pH 7.4.
Reconstitution	Not Applicable

Data



> 95 % as determined by reducing SDS-PAGE.

Background

Complement component C8 is a constituent of the membrane attack complex, C8 alpha, C8 beta and C8G. C8G is a secreted protein and consists a disulfide-linked C8 alpha-gamma heterodimer and a non-covalently associated C8 beta chain. C8 alpha and C8 beta play an important role in complement-mediated bacterial killing together. C8 is involved in the formation of Membrane Attack Complex on bacterial cell membranes. C8 binds to the C5B-7 complex, forming the C5B-8 complex. C5-B8 binds C9 and acts as a catalyst in the polymerization of C9. The gamma subunit seems to be able to bind retinol. Patients lacking C8 are susceptible to certain bacterial infections.

For Research Use Only

A Reliable Research Partner in Life Science and Medicine

Toll-free: 1-888-852-8623

Web: www.elabscience.com

Tel: 1-832-243-6086

Email: techsupport@elabscience.com

Fax: 1-832-243-6017