

Recombinant Human Complement Factor B/CFB Protein (His Tag)

Catalog No. PKSH032272

Note: Centrifuge before opening to ensure complete recovery of vial contents.

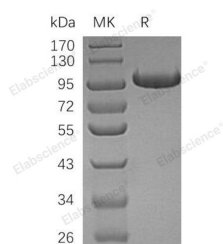
Description

Synonyms	Complement Factor B;C3/C5 Convertase;Glycine-Rich Beta Glycoprotein;GBG;PBF2;Properdin Factor B;CFB;BF;BFD
Species	Human
Expression Host	HEK293 Cells
Sequence	Thr 26-Leu764
Accession	AAH04143.1
Calculated Molecular Weight	84.1 kDa
Observed molecular weight	90-120 kDa
Tag	C-His
Bioactivity	Not validated for activity

Properties

Purity	> 95 % as determined by reducing SDS-PAGE.
Endotoxin	< 1.0 EU per µg of the protein as determined by the LAL method.
Storage	Store at < -20°C, stable for 6 months. Please minimize freeze-thaw cycles.
Shipping	This product is provided as liquid. It is shipped at frozen temperature with blue ice/gel packs. Upon receipt, store it immediately at < -20°C.
Formulation	Supplied as a 0.2 µm filtered solution of 20mM Tris-HCl, 150mM NaCl, pH 8.0.
Reconstitution	Not Applicable

Data



> 95 % as determined by reducing SDS-PAGE.

Background

Complement Factor B (CFB) belongs to the peptidase S1 family of enzymes. It is expressed by hepatocytes and macrophages and localizes to the major histocompatibility complex (MHC) class III region on chromosome 6. CFB which is a component of the alternate pathway of the complement system is cleaved by factor D into 2 fragments: Ba and Bb. Bb. The active subunit Bb is a serine protease which associates with C3b to form the alternative pathway C3 convertase. Bb is involved in the proliferation of preactivated B lymphocytes, while Ba inhibits their proliferation.

For Research Use Only