

# Recombinant Human Coronin-6/CORO6 Protein (His Tag)



Catalog Number:PKSH032282

**Note:** Centrifuge before opening to ensure complete recovery of vial contents.

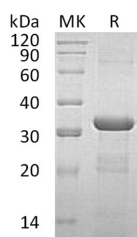
## Description

<b>Synonyms</b>	Coronin-6;Clipin-E;CORO6
<b>Species</b>	Human
<b>Expression Host</b>	E.coli
<b>Sequence</b>	Met 1-Asp237
<b>Accession</b>	Q6QEF8-4
<b>Calculated Molecular Weight</b>	28.3 kDa
<b>Observed molecular weight</b>	30-35 kDa
<b>Tag</b>	N-His

## Properties

<b>Purity</b>	> 95 % as determined by reducing SDS-PAGE.
<b>Endotoxin</b>	< 1.0 EU per µg of the protein as determined by the LAL method.
<b>Storage</b>	Generally, lyophilized proteins are stable for up to 12 months when stored at -20 to -80°C. Reconstituted protein solution can be stored at 4-8°C for 2-7 days. Aliquots of reconstituted samples are stable at < -20°C for 3 months.
<b>Shipping</b>	This product is provided as lyophilized powder which is shipped with ice packs.
<b>Formulation</b>	Lyophilized from a 0.2 µm filtered solution of 20mM PB, 150m M NaCl, 1mM DTT, pH 7.4. Normally 5 % - 8 % trehalose, mannitol and 0.01 % Tween80 are added as protectants before lyophilization. Please refer to the specific buffer information in the p
<b>Reconstitution</b>	Please refer to the printed manual for detailed information.

## Data



> 95 % as determined by reducing SDS-PAGE.

## Background

Coronin 6, a newly identified member of the coronin family, is highly enriched at adult NMJs and regulates AChR clustering via modulating the interaction between receptors and the actin cytoskeletal network. Coronins are a family of conserved actin-binding proteins originally identified in the actin-rich structure of the amoeba Dictyostelium discoideum. To date, seven members of coronins have been identified in mammals, and most exhibit tissue-specific distribution patterns. Coronin 6 is prominently expressed in adult muscle and enriched at the NMJ. Studies with cultured myotubes reveal that Coronin 6 regulates both agrin- and laminin-induced AChR clustering and is important for anchoring AChRs onto the actin cytoskeleton. Also, both the C-terminal region and a conserved Arg29 residue at the N terminus of Coronin

## For Research Use Only

A Reliable Research Partner in Life Science and Medicine

Toll-free: 1-888-852-8623

Web: [www.elabscience.com](http://www.elabscience.com)

Tel: 1-832-243-6086

Email: [techsupport@elabscience.com](mailto:techsupport@elabscience.com)

Fax: 1-832-243-6017

# Recombinant Human Coronin-6/CORO6 Protein (His Tag)



Catalog Number:PKSH032282

6 are essential for its actin-binding activity and stabilization of AChR–cytoskeleton linkage. Importantly, in vivo knockdown of Coronin 6 in mouse skeletal muscle fibers leads to destabilization of AChR clusters, which demonstrates that Coronin 6 is a critical regulator of AChR clustering at the postsynaptic region of the NMJs through modulating the receptor-anchored actin cytoskeleton. The human Coronin 6 has five isoforms produced by alternative splicing, and tissue-specific expression of these isoforms are unclear.

---

## For Research Use Only

A Reliable Research Partner in Life Science and Medicine

Toll-free: 1-888-852-8623

Tel: 1-832-243-6086

Fax: 1-832-243-6017

Web: [www.elabscience.com](http://www.elabscience.com)

Email: [techsupport@elabscience.com](mailto:techsupport@elabscience.com)