

Recombinant Human CTHRC1 Protein (His Tag)

Catalog Number:PKSH032288



Note: Centrifuge before opening to ensure complete recovery of vial contents.

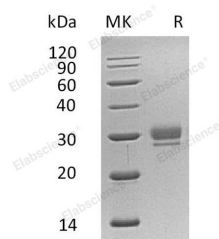
Description

Synonyms	Collagen triple helix repeat-containing protein 1;Protein NMTC1;CTHRC1
Species	Human
Expression Host	HEK293 Cells
Sequence	Ser31-Lys243
Accession	Q96CG8
Calculated Molecular Weight	24.1 kDa
Observed molecular weight	25-30 kDa
Tag	C-His

Properties

Purity	> 95 % as determined by reducing SDS-PAGE.
Endotoxin	< 1.0 EU per µg of the protein as determined by the LAL method.
Storage	Generally, lyophilized proteins are stable for up to 12 months when stored at -20 to -80°C. Reconstituted protein solution can be stored at 4-8°C for 2-7 days. Aliquots of reconstituted samples are stable at < -20°C for 3 months.
Shipping	This product is provided as lyophilized powder which is shipped with ice packs.
Formulation	Lyophilized from a 0.2 µm filtered solution of 20mM PB, 150mM NaCl, pH 7.4. Normally 5 % - 8 % trehalose, mannitol and 0.01% Tween80 are added as protectants before lyophilization. Please refer to the specific buffer information in the printed man
Reconstitution	Please refer to the printed manual for detailed information.

Data



> 95 % as determined by reducing SDS-PAGE.

Background

Collagen triple helix repeat-containing protein 1 is a protein that in humans is encoded by the CTHRC1 gene. It acts as a negative regulator of collagen matrix deposition. It may cause the disease of Barrett esophagus. Patients with Barrett esophagus have an increased risk of esophageal adenocarcinoma. The main cause of Barrett esophagus is gastroesophageal reflux. The retrograde movement of acid and bile salts from the stomach into the esophagus causes prolonged injury to the esophageal epithelium and induces chronic esophagitis, which in turn is believed to trigger the pathologic changes.

For Research Use Only

A Reliable Research Partner in Life Science and Medicine

Toll-free: 1-888-852-8623

Web: www.elabscience.com

Tel: 1-832-243-6086

Email: techsupport@elabscience.com

Fax: 1-832-243-6017