

Recombinant Human CXCL10 Protein

Catalog Number:PKSH032291



Note: Centrifuge before opening to ensure complete recovery of vial contents.

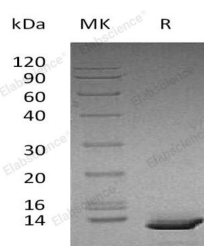
Description

Synonyms	C-X-C Motif Chemokine 10;10 kDa Interferon Gamma-Induced Protein;Gamma-IP10;IP-10;Small-Inducible Cytokine B10;CXCL10;INP10;SCYB10
Species	Human
Expression Host	E.coli
Sequence	Val22-Pro98
Accession	P02778
Calculated Molecular Weight	9.5 kDa
Observed molecular weight	15 kDa
Tag	N-His
Bioactivity	Measure by its ability to chemoattract human PBMCs using a concentration range of 10.0 - 100.0 ng/mL. Note: Results may vary from different PBMC donors.

Properties

Purity	> 98 % as determined by reducing SDS-PAGE.
Endotoxin	< 0.1 EU per µg of the protein as determined by the LAL method.
Storage	Generally, lyophilized proteins are stable for up to 12 months when stored at -20 to -80°C. Reconstituted protein solution can be stored at 4-8°C for 2-7 days. Aliquots of reconstituted samples are stable at < -20°C for 3 months.
Shipping	This product is provided as lyophilized powder which is shipped with ice packs.
Formulation	Lyophilized from sterile PBS, pH 7.4. Normally 5 % - 8 % trehalose, mannitol and 0.01 % Tween80 are added as protectants before lyophilization. Please refer to the specific buffer information in the printed manual.
Reconstitution	Please refer to the printed manual for detailed information.

Data



> 98 % as determined by reducing SDS-PAGE.

Background

Human C-X-C Motif Chemokine Ligand 10 (CXCL10) is a non-ELR chemokine secreted by various cell types; such as monocytes; endothelial cells and fibroblasts; in response to IFN- γ . CXCL10 functions via chemokine receptor CXCR3. CXCL10 has been attributed to several roles; such as chemoattraction for activated T-lymphocytes; inhibition of angiogenesis; and antitumor activity.

For Research Use Only

A Reliable Research Partner in Life Science and Medicine

Toll-free: 1-888-852-8623

Web: www.elabscience.com

Tel: 1-832-243-6086

Email: techsupport@elabscience.com

Fax: 1-832-243-6017