

# Recombinant Human CXCL10 Protein (Fc & His Tag)

Catalog Number:PKSH032292



**Note:** Centrifuge before opening to ensure complete recovery of vial contents.

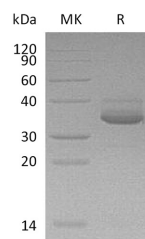
## Description

<b>Synonyms</b>	C-X-C Motif Chemokine 10;10 kDa Interferon Gamma-Induced Protein;Gamma-IP10;IP-10;Small-Inducible Cytokine B10;CXCL10;INP10;SCYB10
<b>Species</b>	Human
<b>Expression Host</b>	HEK293 Cells
<b>Sequence</b>	Val22-Pro98
<b>Accession</b>	P02778
<b>Calculated Molecular Weight</b>	36.6 kDa
<b>Observed molecular weight</b>	35 kDa
<b>Tag</b>	C-Fc-His

## Properties

<b>Purity</b>	> 95 % as determined by reducing SDS-PAGE.
<b>Endotoxin</b>	< 1.0 EU per µg of the protein as determined by the LAL method.
<b>Storage</b>	Generally, lyophilized proteins are stable for up to 12 months when stored at -20 to -80°C. Reconstituted protein solution can be stored at 4-8°C for 2-7 days. Aliquots of reconstituted samples are stable at < -20°C for 3 months.
<b>Shipping</b>	This product is provided as lyophilized powder which is shipped with ice packs.
<b>Formulation</b>	Lyophilized from a 0.2 µm filtered solution of PBS, pH 7.4. Normally 5 % - 8 % trehalose, mannitol and 0.01% Tween80 are added as protectants before lyophilization. Please refer to the specific buffer information in the printed manual.
<b>Reconstitution</b>	Please refer to the printed manual for detailed information.

## Data



> 95 % as determined by reducing SDS-PAGE.

## Background

Human C-X-C Motif Chemokine Ligand 10 (CXCL10) is a non-ELR chemokine secreted by various cell types; such as monocytes; endothelial cells and fibroblasts; in response to IFN- $\gamma$ . CXCL10 functions via chemokine receptor CXCR3. CXCL10 has been attributed to several roles; such as chemoattraction for activated T-lymphocytes; inhibition of angiogenesis; and antitumor activity.

## For Research Use Only

A Reliable Research Partner in Life Science and Medicine

Toll-free: 1-888-852-8623

Web: [www.elabscience.com](http://www.elabscience.com)

Tel: 1-832-243-6086

Email: [techsupport@elabscience.com](mailto:techsupport@elabscience.com)

Fax: 1-832-243-6017