

Note: Centrifuge before opening to ensure complete recovery of vial contents.

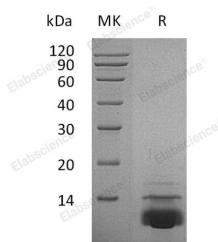
Description

Synonyms	C-X-C Motif Chemokine 5;ENA-78 (1-78);Epithelial-Derived Neutrophil-Activating Protein 78;Neutrophil-Activating Peptide ENA-78;Small-Inducible Cytokine B5;ENA-78 (8-78);ENA-78 (9-78);CXCL5;ENA78;SCYB5
Species	Human
Expression Host	E.coli
Sequence	Arg 45-Asn114
Accession	P42830
Calculated Molecular Weight	8.5 kDa
Observed molecular weight	12 kDa
Tag	N-His
Bioactivity	Measure by its ability to chemoattract BaF3 cells transfected with human CXCR2.The ED ₅₀ for this effect is < 10 ng/mL.

Properties

Purity	> 98 % as determined by reducing SDS-PAGE.
Endotoxin	< 0.1 EU per µg of the protein as determined by the LAL method.
Storage	Generally, lyophilized proteins are stable for up to 12 months when stored at -20 to -80°C. Reconstituted protein solution can be stored at 4-8°C for 2-7 days. Aliquots of reconstituted samples are stable at < -20°C for 3 months.
Shipping	This product is provided as lyophilized powder which is shipped with ice packs.
Formulation	Lyophilized from sterile PBS, pH 7.4. Normally 5 % - 8 % trehalose, mannitol and 0.01% Tween80 are added as protectants before lyophilization. Please refer to the specific buffer information in the printed manual.
Reconstitution	Please refer to the printed manual for detailed information.

Data



> 98 % as determined by reducing SDS-PAGE.

Background

C-X-C Motif Chemokine 5 (CXCL5) is a member of the Intercrine Alpha (Chemokine CXC) family. CXCL5 can be cleaved into the following two chains, ENA-78 (8-78) and ENA-78 (9-78). In vitro, ENA-78(8-78) and ENA-78 (9-78) show a threefold higher chemotactic activity for neutrophil granulocytes. CXCL5 is a secreted protein and exercises the functions primarily through interactions with CXCR2. The upregulation of CXCL5 contributes to increased

For Research Use Only

A Reliable Research Partner in Life Science and Medicine

Toll-free: 1-888-852-8623

Web: www.elabscience.com

Tel: 1-832-243-6086

Email: techsupport@elabscience.com

Fax: 1-832-243-6017

Recombinant Human CXCL5 Protein

Catalog Number:PKSH032303



vascularization, tumor grown, and metastasis in many cancers.

For Research Use Only

A Reliable Research Partner in Life Science and Medicine

Toll-free: 1-888-852-8623

Tel: 1-832-243-6086

Fax: 1-832-243-6017

Web: www.elabscience.com

Email: techsupport@elabscience.com