

# Recombinant Human Cyclophilin C/PPIC Protein (His&Trx Tag)

Catalog Number:PKSH032316

**Note:** Centrifuge before opening to ensure complete recovery of vial contents.

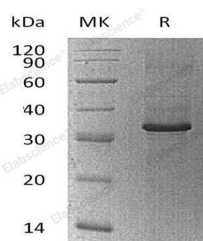
## Description

<b>Synonyms</b>	Peptidyl-Prolyl Cis-Trans Isomerase C;PPIase C;Cyclophilin C;Rotamase C;PPIC;CYPC
<b>Species</b>	Human
<b>Expression Host</b>	E.coli
<b>Sequence</b>	Lys31-Asp182
<b>Accession</b>	P45877
<b>Calculated Molecular Weight</b>	33.8 kDa
<b>Observed molecular weight</b>	34 kDa
<b>Tag</b>	N-Trx-His

## Properties

<b>Purity</b>	> 95 % as determined by reducing SDS-PAGE.
<b>Endotoxin</b>	< 1.0 EU per µg of the protein as determined by the LAL method.
<b>Storage</b>	Store at < -20°C, stable for 6 months. Please minimize freeze-thaw cycles.
<b>Shipping</b>	This product is provided as liquid. It is shipped at frozen temperature with blue ice/gel packs. Upon receipt, store it immediately at < - 20°C.
<b>Formulation</b>	Supplied as a 0.2 µm filtered solution of 20mM PB, 150mM NaCl, 10% Glycerol, pH 7.4.
<b>Reconstitution</b>	Not Applicable

## Data



> 95 % as determined by reducing SDS-PAGE.

## Background

Cyclophilin C is an enzyme (EC 5.2.1.8) found in both prokaryotes and eukaryotes that interconverts the cis and trans isomers of peptide bonds with the amino acid proline. Proline has an unusually conformationally restrained peptide bond due to its cyclic structure with its side chain bonded to its secondary amine nitrogen. Most amino acids have a strong energetic preference for the trans peptide bond conformation due to steric hindrance, but prolines unusual structure stabilizes the cis form so that both isomers are populated under biologically relevant conditions. Proteins with prolyl isomerase activity include cyclophilin, FKBP, and parvulin, although larger proteins can also contain prolyl isomerase domains.

## For Research Use Only

A Reliable Research Partner in Life Science and Medicine

Toll-free: 1-888-852-8623

Web: [www.elabscience.com](http://www.elabscience.com)

Tel: 1-832-243-6086

Email: [techsupport@elabscience.com](mailto:techsupport@elabscience.com)

Fax: 1-832-243-6017