

Recombinant Human Cystathionine γ -Lyase/CTH Protein



Catalog Number:PKSH032319

Note: Centrifuge before opening to ensure complete recovery of vial contents.

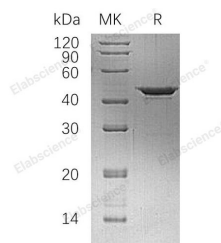
Description

Synonyms	Cystathionine Gamma-Lyase;Cysteine-Protein Sulfhydrase;Gamma-Cystathionase;CTH
Species	Human
Expression Host	E.coli
Sequence	Met 1-Ser405
Accession	P32929
Calculated Molecular Weight	44.7 kDa
Observed molecular weight	38-50 kDa
Tag	None

Properties

Purity	> 85 % as determined by reducing SDS-PAGE.
Endotoxin	< 1.0 EU per μ g of the protein as determined by the LAL method.
Storage	Store at < -20°C, stable for 6 months. Please minimize freeze-thaw cycles.
Shipping	This product is provided as liquid. It is shipped at frozen temperature with blue ice/gel packs. Upon receipt, store it immediately at < - 20°C.
Formulation	Supplied as a 0.2 μ m filtered solution of 20mM Tris-HCl, 8% Sucrose, 0.05% Tween 80, pH8.0.
Reconstitution	Not Applicable

Data



> 85 % as determined by reducing SDS-PAGE.

Background

Cystathionine Gamma-Lyase (CTH) belongs to the trans-sulfuration enzymes family. CTH exists as a homotetramer and interacts with CALM in a calcium-dependent manner. CTH breaks down cystathionine into cysteine, ammonia and 2-oxobutanoate. CTH catalyzes the last step in the trans-sulfuration pathway from methionine to cysteine and has broad substrate specificity. Defects in CTH will lead to cystathioninuria, which is an autosomal recessive phenotype characterized by abnormal accumulation of plasma cystathionine.

For Research Use Only

A Reliable Research Partner in Life Science and Medicine

Toll-free: 1-888-852-8623

Web: www.elabscience.com

Tel: 1-832-243-6086

Email: techsupport@elabscience.com

Fax: 1-832-243-6017