

# Recombinant Human Cystatin C/CST3 Protein (E.coli, His Tag)



Catalog Number:PKSH032324

**Note:** Centrifuge before opening to ensure complete recovery of vial contents.

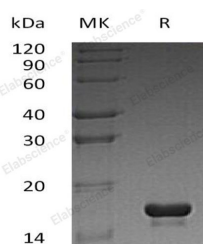
## Description

<b>Synonyms</b>	ARMD11;Gamma-trace;Neuroendocrine basic polypeptide;Post-gamma-globulin;Cystatin-3
<b>Species</b>	Human
<b>Expression Host</b>	E.coli
<b>Sequence</b>	Gly26-Ala146
<b>Accession</b>	P01034
<b>Calculated Molecular Weight</b>	16.5 kDa
<b>Observed molecular weight</b>	16 kDa
<b>Tag</b>	N-His

## Properties

<b>Purity</b>	> 95 % as determined by reducing SDS-PAGE.
<b>Endotoxin</b>	< 1.0 EU per µg of the protein as determined by the LAL method.
<b>Storage</b>	Generally, lyophilized proteins are stable for up to 12 months when stored at -20 to -80°C. Reconstituted protein solution can be stored at 4-8°C for 2-7 days. Aliquots of reconstituted samples are stable at < -20°C for 3 months.
<b>Shipping</b>	This product is provided as lyophilized powder which is shipped with ice packs.
<b>Formulation</b>	Lyophilized from a 0.2 µm filtered solution of 20mM HEPES, 150mM NaCl, 1mM EDTA, 5% sucrose, 0.009% Tween80, pH7.4. Normally 5 % - 8 % trehalose, mannitol and 0.01 % Tween80 are added as protectants before lyophilization. Please refer to the specif
<b>Reconstitution</b>	Please refer to the printed manual for detailed information.

## Data



> 95 % as determined by reducing SDS-PAGE.

## Background

Cystatin C is a member of family 2 of the cystatin superfamily. It is ubiquitous in human tissues and body fluids and mainly used as a biomarker of kidney function. Cystatin C inhibits many cysteine proteases such as papain and Cathepsins B; H; K; L and S. As an inhibitor of cysteine proteinases; Cystatin C is thought to serve an important physiological role as a local regulator of this enzyme activity. Recently; it has been studied for its role in predicting new-onset or deteriorating cardiovascular disease. It also seems to play a role in brain disorders involving amyloid (a specific type of protein deposition); such as Alzheimer's disease.

## For Research Use Only

A Reliable Research Partner in Life Science and Medicine

Toll-free: 1-888-852-8623

Web: [www.elabscience.com](http://www.elabscience.com)

Tel: 1-832-243-6086

Email: [techsupport@elabscience.com](mailto:techsupport@elabscience.com)

Fax: 1-832-243-6017