

Recombinant Human Cystatin SN/CST1 Protein (His Tag)

Catalog No. PKSH032329

Note: Centrifuge before opening to ensure complete recovery of vial contents.

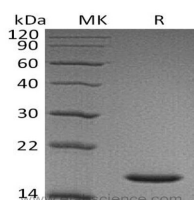
Description

| | |
|------------------------------------|------------------------------------------------------------------|
| Synonyms | Cystatin-SN;Cystatin-SA-I;Cystatin-1;Salivary Cystatin-SA-1;CST1 |
| Species | Human |
| Expression Host | HEK293 Cells |
| Sequence | Trp21-Ser141 |
| Accession | P01037 |
| Calculated Molecular Weight | 15.4 kDa |
| Observed molecular weight | 17 kDa |
| Tag | C-His |
| Bioactivity | Not validated for activity |

Properties

| | |
|-----------------------|-------------------------------------------------------------------------------------------------------------------------------------------------------------------------------------------------------------------------------------------------------------|
| Purity | > 95 % as determined by reducing SDS-PAGE. |
| Endotoxin | < 1.0 EU per µg of the protein as determined by the LAL method. |
| Storage | Generally, lyophilized proteins are stable for up to 12 months when stored at -20 to -80°C. Reconstituted protein solution can be stored at 4-8°C for 2-7 days. Aliquots of reconstituted samples are stable at < -20°C for 3 months. |
| Shipping | This product is provided as lyophilized powder which is shipped with ice packs. |
| Formulation | Lyophilized from a 0.2 µm filtered solution of 20mM MES, 150mM NaCl, pH 5.5. Normally 5% - 8% trehalose, mannitol and 0.01% Tween 80 are added as protectants before lyophilization. Please refer to the specific buffer information in the printed manual. |
| Reconstitution | Please refer to the printed manual for detailed information. |

Data



> 95 % as determined by reducing SDS-PAGE.

Background

Cystatin-SN is a member of family 2 of the Cystatin superfamily and a cysteine proteinase inhibitor found in saliva, tears, urine, and seminal fluid. Together with Cystatins S and SA, it is produced by the salivary gland and secreted largely in the

For Research Use Only

submandibular/sublingual saliva. Cystatin-SN inhibits members of the Papain family including Cathepsins B, C, H and L.