

# Recombinant Human CDO1 Protein (His Tag)

Catalog Number:PKSH032330



**Note:** Centrifuge before opening to ensure complete recovery of vial contents.

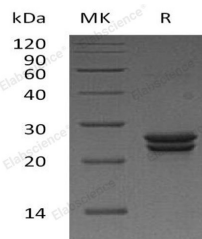
## Description

<b>Synonyms</b>	Cysteine Dioxygenase Type 1;Cysteine Dioxygenase Type I;CDO;CDO-I;CDO1
<b>Species</b>	Human
<b>Expression Host</b>	E.coli
<b>Sequence</b>	Met 1-Asn200
<b>Accession</b>	Q16878
<b>Calculated Molecular Weight</b>	25.1 kDa
<b>Observed molecular weight</b>	20-28 kDa
<b>Tag</b>	N-His

## Properties

<b>Purity</b>	> 95 % as determined by reducing SDS-PAGE.
<b>Endotoxin</b>	< 1.0 EU per µg of the protein as determined by the LAL method.
<b>Storage</b>	Store at < -20°C, stable for 6 months. Please minimize freeze-thaw cycles.
<b>Shipping</b>	This product is provided as liquid. It is shipped at frozen temperature with blue ice/gel packs. Upon receipt, store it immediately at < - 20°C.
<b>Formulation</b>	Supplied as a 0.2 µm filtered solution of 20mM Tris-HCl, 1mM DTT, 10% Glycerol, pH 8.0.
<b>Reconstitution</b>	Not Applicable

## Data



> 95 % as determined by reducing SDS-PAGE.

## Background

Cysteine Dioxygenase Type 1 (CDO1) is a mammalian non-heme iron enzyme that belongs to the cysteine dioxygenase family. CDO1 is highly expressed in the liver and placenta, and has a low expression in heart, brain and pancreas. CDO1 can also be detected in hepatoblastoma HepG2 cells. CDO1 catalyzes the conversion of L-cysteine to cysteine sulfinic acid by incorporation of dioxygen. CDO1 is a vital regulator of cellular cysteine concentrations and has an essential role in maintaining the hepatic concentration of intracellular free cysteine within a proper narrow range. CDO1 is able to alter intracellular cysteine levels and glutathione levels.

## For Research Use Only

A Reliable Research Partner in Life Science and Medicine

Toll-free: 1-888-852-8623

Web: [www.elabscience.com](http://www.elabscience.com)

Tel: 1-832-243-6086

Email: [techsupport@elabscience.com](mailto:techsupport@elabscience.com)

Fax: 1-832-243-6017