

# Recombinant Human Dipeptidase 1/DPEP1 Protein (His Tag)



Catalog Number:PKSH032356

**Note:** Centrifuge before opening to ensure complete recovery of vial contents.

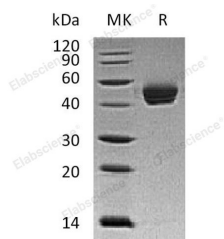
## Description

<b>Synonyms</b>	Dipeptidase 1;Dehydropeptidase-I;Microsomal Dipeptidase;Renal Dipeptidase;hRDP;DPEP1;MDP;RDP;MBD1
<b>Species</b>	Human
<b>Expression Host</b>	HEK293 Cells
<b>Sequence</b>	Asp17-Ser385
<b>Accession</b>	P16444
<b>Calculated Molecular Weight</b>	42.1 kDa
<b>Observed molecular weight</b>	41 kDa
<b>Tag</b>	C-His

## Properties

<b>Purity</b>	> 95 % as determined by reducing SDS-PAGE.
<b>Endotoxin</b>	< 1.0 EU per µg of the protein as determined by the LAL method.
<b>Storage</b>	Store at < -20°C, stable for 6 months. Please minimize freeze-thaw cycles.
<b>Shipping</b>	This product is provided as liquid. It is shipped at frozen temperature with blue ice/gel packs. Upon receipt, store it immediately at < - 20°C.
<b>Formulation</b>	Supplied as a 0.2 µm filtered solution of PBS, 10% Glycerol, pH 7.4.
<b>Reconstitution</b>	Not Applicable

## Data



> 95 % as determined by reducing SDS-PAGE.

## Background

Dipeptidase 1 (DPEP1) is a kidney membrane enzyme that belongs to the peptidase M19 family. DPEP1 is a homodimer and is inhibited by L-penicillamine. DPEP1 hydrolyzes a variety of dipeptides and is implicated in renal metabolism of glutathione and its conjugates. DPEP1 is responsible for hydrolysis of the beta-lactam ring of antibiotics; such as penem and carbapenem. DPEP1 may play an important role in the regulation of leukotriene activity. DPEP1 expression in cancer is significantly higher than that in normal tissue. However; DPEP1 expression decreased with pathological differentiation; lymph-node and distant metastasis.

## For Research Use Only

A Reliable Research Partner in Life Science and Medicine

Toll-free: 1-888-852-8623

Web: [www.elabscience.com](http://www.elabscience.com)

Tel: 1-832-243-6086

Email: [techsupport@elabscience.com](mailto:techsupport@elabscience.com)

Fax: 1-832-243-6017