

# Recombinant Human POLD2 Protein (His Tag)

Catalog Number:PKSH032361



**Note:** Centrifuge before opening to ensure complete recovery of vial contents.

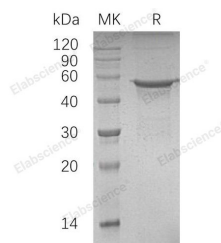
## Description

<b>Synonyms</b>	DNA Polymerase Delta Subunit 2;DNA Polymerase Delta Subunit p50;POLD2
<b>Species</b>	Human
<b>Expression Host</b>	E.coli
<b>Sequence</b>	Met 1-Pro469
<b>Accession</b>	P49005
<b>Calculated Molecular Weight</b>	52.3 kDa
<b>Observed molecular weight</b>	56 kDa
<b>Tag</b>	C-His

## Properties

<b>Purity</b>	> 85 % as determined by reducing SDS-PAGE.
<b>Endotoxin</b>	< 1.0 EU per µg of the protein as determined by the LAL method.
<b>Storage</b>	Store at < -20°C, stable for 6 months. Please minimize freeze-thaw cycles.
<b>Shipping</b>	This product is provided as liquid. It is shipped at frozen temperature with blue ice/gel packs. Upon receipt, store it immediately at < - 20°C.
<b>Formulation</b>	Supplied as a 0.2 µm filtered solution of PBS, 10% Glycerol, pH 7.4.
<b>Reconstitution</b>	Not Applicable

## Data



> 85 % as determined by reducing SDS-PAGE.

## Background

DNA Polymerase Delta Subunit 2 (POLD2) belongs to the DNA polymerase delta/II small subunit family. POLD2 can form a heterotetramer composed of subunits of 125 kDa, 50 kDa, 66 kDa and 12 kDa. POLD2 possesses both polymerase and 3' to 5' exonuclease activity and plays a critical role in DNA replication and repair. POLD2 is required for the stimulation of DNA polymerase delta activity by the processivity cofactor proliferating cell nuclear antigen (PCNA).

## For Research Use Only

A Reliable Research Partner in Life Science and Medicine

Toll-free: 1-888-852-8623

Web: [www.elabscience.com](http://www.elabscience.com)

Tel: 1-832-243-6086

Email: [techsupport@elabscience.com](mailto:techsupport@elabscience.com)

Fax: 1-832-243-6017