

Recombinant Human POLD2 Protein (His Tag)

Catalog Number:PKSH032361



Note: Centrifuge before opening to ensure complete recovery of vial contents.

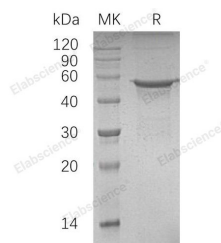
Description

Synonyms	DNA Polymerase Delta Subunit 2;DNA Polymerase Delta Subunit p50;POLD2
Species	Human
Expression Host	E.coli
Sequence	Met 1-Pro469
Accession	P49005
Calculated Molecular Weight	52.3 kDa
Observed molecular weight	56 kDa
Tag	C-His

Properties

Purity	> 85 % as determined by reducing SDS-PAGE.
Endotoxin	< 1.0 EU per µg of the protein as determined by the LAL method.
Storage	Store at < -20°C, stable for 6 months. Please minimize freeze-thaw cycles.
Shipping	This product is provided as liquid. It is shipped at frozen temperature with blue ice/gel packs. Upon receipt, store it immediately at < - 20°C.
Formulation	Supplied as a 0.2 µm filtered solution of PBS, 10% Glycerol, pH 7.4.
Reconstitution	Not Applicable

Data



> 85 % as determined by reducing SDS-PAGE.

Background

DNA Polymerase Delta Subunit 2 (POLD2) belongs to the DNA polymerase delta/II small subunit family. POLD2 can form a heterotetramer composed of subunits of 125 kDa, 50 kDa, 66 kDa and 12 kDa. POLD2 possesses both polymerase and 3' to 5' exonuclease activity and plays a critical role in DNA replication and repair. POLD2 is required for the stimulation of DNA polymerase delta activity by the processivity cofactor proliferating cell nuclear antigen (PCNA).

For Research Use Only

A Reliable Research Partner in Life Science and Medicine

Toll-free: 1-888-852-8623

Web: www.elabscience.com

Tel: 1-832-243-6086

Email: techsupport@elabscience.com

Fax: 1-832-243-6017