

Recombinant Human BDH1 Protein (His Tag)

Catalog Number:PKSH032366



Note: Centrifuge before opening to ensure complete recovery of vial contents.

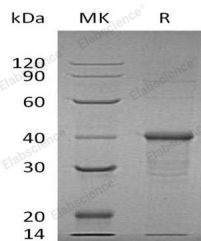
Description

Synonyms	D-Beta-Hydroxybutyrate Dehydrogenase Mitochondrial;BDH;3-Hydroxybutyrate Dehydrogenase;BDH
Species	Human
Expression Host	E.coli
Sequence	Met 1-Arg343
Accession	Q02338
Calculated Molecular Weight	40.3 kDa
Observed molecular weight	40 kDa
Tag	N-His

Properties

Purity	> 95 % as determined by reducing SDS-PAGE.
Endotoxin	< 1.0 EU per µg of the protein as determined by the LAL method.
Storage	Store at < -20°C, stable for 6 months. Please minimize freeze-thaw cycles.
Shipping	This product is provided as liquid. It is shipped at frozen temperature with blue ice/gel packs. Upon receipt, store it immediately at < - 20°C.
Formulation	Supplied as a 0.2 µm filtered solution of 50mM Tris-HCl, 1mM DTT, pH 7.5.
Reconstitution	Not Applicable

Data



> 95 % as determined by reducing SDS-PAGE.

Background

D-Beta-Hydroxybutyrate Dehydrogenase Mitochondrial (BDH) is a member of the short-chain dehydrogenases/reductases (SDR) family. BDH is localized in the mitochondrion matrix. BDH forms a homotetrameric lipid-requiring enzyme of the mitochondrial membrane and has a specific necessity for phosphatidylcholine for optimal enzymatic activity. BDH catalyzes the interconversion of acetoacetate and (R)-3-hydroxybutyrate, the 2 main ketone bodies formed during fatty acid catabolism.

For Research Use Only

A Reliable Research Partner in Life Science and Medicine

Toll-free: 1-888-852-8623

Web: www.elabscience.com

Tel: 1-832-243-6086

Email: techsupport@elabscience.com

Fax: 1-832-243-6017