

Recombinant Human INSL4 Protein (His Tag)

Catalog No. PKSH032370

Note: Centrifuge before opening to ensure complete recovery of vial contents.

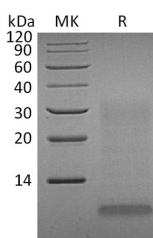
Description

Synonyms	Early Placenta Insulin-Like Peptide;EPIL;Insulin-Like Peptide 4;Placentin;INSL4
Species	Human
Expression Host	HEK293 Cells
Sequence	Ala26-Thr139
Accession	Q14641
Calculated Molecular Weight	13.6 kDa
Observed molecular weight	9 kDa
Tag	C-His
Bioactivity	Not validated for activity

Properties

Purity	> 80 % as determined by reducing SDS-PAGE.
Endotoxin	< 1.0 EU per µg of the protein as determined by the LAL method.
Storage	Generally, lyophilized proteins are stable for up to 12 months when stored at -20 to -80°C. Reconstituted protein solution can be stored at 4-8°C for 2-7 days. Aliquots of reconstituted samples are stable at < -20°C for 3 months.
Shipping	This product is provided as lyophilized powder which is shipped with ice packs.
Formulation	Lyophilized from a 0.2 µm filtered solution of 20mM Tris-HCl, 150mM NaCl, pH 8.0. Normally 5% - 8% trehalose, mannitol and 0.01% Tween 80 are added as protectants before lyophilization. Please refer to the specific buffer information in the printed manual.
Reconstitution	Please refer to the printed manual for detailed information.

Data



> 80 % as determined by reducing SDS-PAGE.

Background

Early Placenta Insulin-Like Peptide (INSL4) belongs to the insulin family. INSL4 is expressed in the early placental

For Research Use Only

cytotrophoblast and syncytiotrophoblast INSL4 is a secreted protein and a precursor that undergoes post-translational cleavage to produce 3 polypeptide chains, A-C, that form tertiary structures composed of either all three chains, or just the A and B chains. INSL4 plays an important role in the development of trophoblast and in the regulation of bone formation.