

# Recombinant Human PI3/Elafin Protein (His Tag)

Catalog Number:PKSH032375



**Note:** Centrifuge before opening to ensure complete recovery of vial contents.

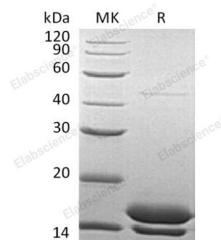
## Description

<b>Synonyms</b>	Elafin;Elastase-Specific Inhibitor;ESI;Peptidase Inhibitor 3;PI-3;Protease inhibitor WAP3;Skin-Derived Antileukoproteinase;SKALP;WAP Four-Disulfide Core Domain Protein 14;PI3;WAP3;WFDC14
<b>Species</b>	Human
<b>Expression Host</b>	HEK293 Cells
<b>Sequence</b>	Ala23-Gln117
<b>Accession</b>	P19957
<b>Calculated Molecular Weight</b>	11.0 kDa
<b>Observed molecular weight</b>	13-18 kDa
<b>Tag</b>	C-His

## Properties

<b>Purity</b>	> 95 % as determined by reducing SDS-PAGE.
<b>Endotoxin</b>	< 1.0 EU per µg of the protein as determined by the LAL method.
<b>Storage</b>	Store at < -20°C, stable for 6 months. Please minimize freeze-thaw cycles.
<b>Shipping</b>	This product is provided as liquid. It is shipped at frozen temperature with blue ice/gel packs. Upon receipt, store it immediately at < - 20°C.
<b>Formulation</b>	Supplied as a 0.2 µm filtered solution of 20mM Tris-HCl, 150mM NaCl, pH 7.5.
<b>Reconstitution</b>	Not Applicable

## Data



> 95 % as determined by reducing SDS-PAGE.

## Background

Elafin is a secreted protein. Elafin consists of two domains: the transglutaminase substrate domain (cementoin moiety) and the elastase inhibitor domain. The transglutaminase substrate domain serves as an anchor to localize Elafin covalently to specific sites on extracellular matrix proteins. It is shown that Elafin can be used as a biomarker for graft versus host disease of the skin. Elafin is expressed in the skin during wound healing through activation of the epidermal growth factor receptor. Elafin may prevent elastase-mediated tissue proteolysis.

## For Research Use Only

A Reliable Research Partner in Life Science and Medicine

Toll-free: 1-888-852-8623

Web: [www.elabscience.com](http://www.elabscience.com)

Tel: 1-832-243-6086

Email: [techsupport@elabscience.com](mailto:techsupport@elabscience.com)

Fax: 1-832-243-6017