

Recombinant Human EDF1/MBF1 Protein (His Tag)

Catalog No. PKSH032381

Note: Centrifuge before opening to ensure complete recovery of vial contents.

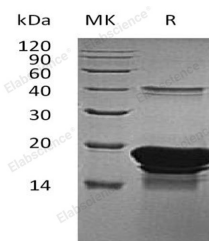
Description

Synonyms	Endothelial Differentiation-Related Factor 1;EDF-1;Multiprotein-Bridging Factor 1;MBF1;EDF1
Species	Human
Expression Host	E.coli
Sequence	Ala2-Lys148
Accession	O60869
Calculated Molecular Weight	17.4 kDa
Observed molecular weight	16-20 kDa
Tag	C-His
Bioactivity	Not validated for activity

Properties

Purity	> 95 % as determined by reducing SDS-PAGE.
Endotoxin	< 1.0 EU per µg of the protein as determined by the LAL method.
Storage	Generally, lyophilized proteins are stable for up to 12 months when stored at -20 to -80°C. Reconstituted protein solution can be stored at 4-8°C for 2-7 days. Aliquots of reconstituted samples are stable at < -20°C for 3 months.
Shipping	This product is provided as lyophilized powder which is shipped with ice packs.
Formulation	Lyophilized from a 0.2 µm filtered solution of 20mM Tris-HCl, 150mM NaCl, pH 8.0. Normally 5% - 8% trehalose, mannitol and 0.01% Tween 80 are added as protectants before lyophilization. Please refer to the specific buffer information in the printed manual.
Reconstitution	Please refer to the printed manual for detailed information.

Data



> 95 % as determined by reducing SDS-PAGE.

Background

For Research Use Only

Endothelial Differentiation-Related Factor 1 (EDF1) is a 148 amino acid transcriptional coactivator that contains 1 HTH cro/C1-type DNA-binding domain. It has been postulated that the protein functions as a bridging molecule that interconnects regulatory proteins and the basal transcriptional machinery, thereby modulating the transcription of genes involved in endothelial differentiation. When endothelial cells are induced to differentiate in vitro, EDF1 is downregulated, leading to inhibition of cell growth and cell polarization. EDF1 binds calmodulin through its IQ domain and regulates nitric oxide synthase activity through calmodulin sequestration in the cytoplasm. Though ubiquitously expressed, EDF1 is most abundant in adult liver, heart, adipose tissues, intestine and pancreas. In fetal tissues, EDF1 is most abundant in kidney. There are two isoforms of EDF1 that are produced as a result of alternative splicing events.