

Recombinant Human EpCAM/TROP-1 Protein (Fc Tag)

Catalog Number:PKSH032383



Note: Centrifuge before opening to ensure complete recovery of vial contents.

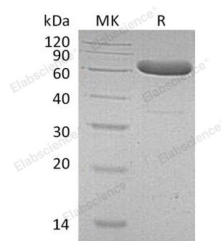
Description

Synonyms	Epithelial Cell Adhesion Molecule;Ep-CAM;Adenocarcinoma-Associated Antigen;Cell Surface Glycoprotein Trop-1;Epithelial Cell Surface Antigen;Epithelial Glycoprotein 314;EGP314;Major Gastrointestinal Tumor-Associated Protein GA733-2;Tumor-Associated Calcium Signal Transducer 1;CD326;EPCAM;GA733-2;TROP1
Species	Human
Expression Host	HEK293 Cells
Sequence	Gln24-Lys265
Accession	AAH14785.1
Calculated Molecular Weight	54.5 kDa
Observed molecular weight	60-80 kDa
Tag	C-Fc

Properties

Purity	> 95 % as determined by reducing SDS-PAGE.
Endotoxin	< 1.0 EU per µg of the protein as determined by the LAL method.
Storage	Generally, lyophilized proteins are stable for up to 12 months when stored at -20 to -80°C. Reconstituted protein solution can be stored at 4-8°C for 2-7 days. Aliquots of reconstituted samples are stable at < -20°C for 3 months.
Shipping	This product is provided as lyophilized powder which is shipped with ice packs.
Formulation	Lyophilized from a 0.2 µm filtered solution of PBS, pH 7.4. Normally 5 % - 8 % trehalose, mannitol and 0.01% Tween80 are added as protectants before lyophilization. Please refer to the specific buffer information in the printed manual.
Reconstitution	Please refer to the printed manual for detailed information.

Data



> 95 % as determined by reducing SDS-PAGE.

Background

Epithelial Cell Adhesion Molecule (EpCAM) is a signal type I transmembrane glycoprotein that belongs to the EPCAM family. EpCAM is composed of an extracellular domain with one thyroglobulin type-1 domain; a transmembrane domain and a cytoplasmic domain. EpCAM is found on the surface of adenocarcinoma; but not on mesodermal or neural cell membranes. The EpCAM molecule has been shown to function as a homophilic Ca²⁺ independent adhesion molecule. It

For Research Use Only

A Reliable Research Partner in Life Science and Medicine

Toll-free: 1-888-852-8623

Web: www.elabscience.com

Tel: 1-832-243-6086

Email: techsupport@elabscience.com

Fax: 1-832-243-6017

Recombinant Human EpCAM/TROP-1 Protein (Fc Tag)

Catalog Number:PKSH032383



may act as a physical homophilic interaction molecule between intestinal epithelial cells (IECs) and intraepithelial lymphocytes (IELs) at the mucosal epithelium as an immunological barrier providing the first line of defense against infection. Defects in EPCAM are a cause of hereditary non-polyposis colorectal cancer type 8 (HNPCC8) and diarrhea type 5 (DIAR5). EpCAM plays a role in embryonic stem cells proliferation and differentiation; it up-regulates the expression of FABP5; MYC and Cyclin A and Cyclin E. It is highly and selectively expressed by undifferentiated embryonic stem cells.

For Research Use Only

A Reliable Research Partner in Life Science and Medicine

Toll-free: 1-888-852-8623

Tel: 1-832-243-6086

Fax: 1-832-243-6017

Web: www.elabscience.com

Email: techsupport@elabscience.com