

Recombinant Human EGFR/ErbB1 Protein (aa 25-645, Fc Tag)

Catalog No. PKSH032398

Note: Centrifuge before opening to ensure complete recovery of vial contents.

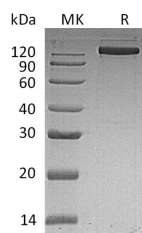
Description

Synonyms	Epidermal growth factor receptor;EGFR;Proto-oncogene c-ErbB-1;Receptortyrosine-protein kinase erbB-1;EGFR
Species	Human
Expression Host	HEK293 Cells
Sequence	Leu25-Ser645
Accession	P00533
Calculated Molecular Weight	95.7 kDa
Observed molecular weight	120-160 kDa
Tag	C-Fc
Bioactivity	Not validated for activity

Properties

Purity	> 95 % as determined by reducing SDS-PAGE.
Endotoxin	< 1.0 EU per µg of the protein as determined by the LAL method.
Storage	Generally, lyophilized proteins are stable for up to 12 months when stored at -20 to -80°C. Reconstituted protein solution can be stored at 4-8°C for 2-7 days. Aliquots of reconstituted samples are stable at < -20°C for 3 months.
Shipping	This product is provided as lyophilized powder which is shipped with ice packs.
Formulation	Lyophilized from a 0.2 µm filtered solution of PBS, pH 7.4. Normally 5 % - 8 % trehalose, mannitol and 0.01% Tween80 are added as protectants before lyophilization. Please refer to the specific buffer information in the printed manual.
Reconstitution	Please refer to the printed manual for detailed information.

Data



> 95 % as determined by reducing SDS-PAGE.

Background

EGFR is a transmembrane glycoprotein that is a member of the protein kinase superfamily. This protein is a receptor for

For Research Use Only

members of the epidermal growth factor family. EGFR is a cell surface protein that binds to epidermal growth factor. Binding of the protein to a ligand induces receptor dimerization and tyrosine autophosphorylation and leads to cell proliferation. Activates at least 4 major downstream signaling cascades including the RAS-RAF-MEK-ERK; PI3 kinase-AKT; PLCgamma-PKC and STATs modules. May also activate the NF-kappa-B signaling cascade. Also directly phosphorylates other proteins like RGS16; activating its GTPase activity and probably coupling the EGF receptor signaling to the G protein-coupled receptor signaling.