

Recombinant Human MAN1B1 Protein (His Tag)

Catalog Number:PKSH032400



Note: Centrifuge before opening to ensure complete recovery of vial contents.

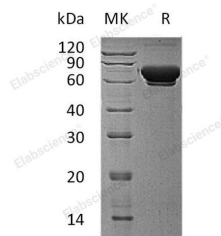
Description

Synonyms	Endoplasmic Reticulum Mannosyl-Oligosaccharide 1;2-Alpha-Mannosidase;ER Alpha-1;2-Mannosidase;ER Mannosidase 1;ERMan1;Man9GlcNAc2-Specific-Processing Alpha-Mannosidase;Mannosidase Alpha Class 1B Member 1;MAN1B1
Species	Human
Expression Host	HEK293 Cells
Sequence	Asp106-Ala699
Accession	Q9UKM7
Calculated Molecular Weight	68.7 kDa
Observed molecular weight	58-80 kDa
Tag	C-His

Properties

Purity	> 95 % as determined by reducing SDS-PAGE.
Endotoxin	< 1.0 EU per µg of the protein as determined by the LAL method.
Storage	Store at < -20°C, stable for 6 months. Please minimize freeze-thaw cycles.
Shipping	This product is provided as liquid. It is shipped at frozen temperature with blue ice/gel packs. Upon receipt, store it immediately at < - 20°C.
Formulation	Supplied as a 0.2 µm filtered solution of 50mM Tris-HCl,10mM reduced Glutathione,pH 8.0.
Reconstitution	Not Applicable

Data



> 95 % as determined by reducing SDS-PAGE.

Background

Endoplasmic Reticulum Mannosyl-Oligosaccharide 1,2- α -Mannosidase (MAN1B1) belongs to the glycosyl hydrolase 47 family. MAB1B1 is a single-pass type II membrane protein and widely expressed in many tissues. MAB1B1 is involved in glycoprotein quality control targeting of misfolded glycoproteins for degradation. MAB1B1 can be inhibited by both 1-deoxymannojirimycin (dMNJ) and kifunensine. Defects in MAN1B1 are the cause of mental retardation autosomal recessive type 15 (MRT15). Mental retardation is characterized by significantly below average general intellectual functioning, it is also associated with impairments in adaptative behavior and manifested during the developmental period.

For Research Use Only

A Reliable Research Partner in Life Science and Medicine

Toll-free: 1-888-852-8623

Web: www.elabscience.com

Tel: 1-832-243-6086

Email: techsupport@elabscience.com

Fax: 1-832-243-6017