

Recombinant Human E-Selectin/SELE Protein (His Tag)

Catalog Number:PKSH032403



Note: Centrifuge before opening to ensure complete recovery of vial contents.

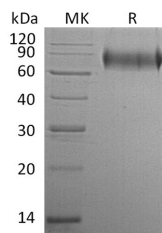
Description

Synonyms	E-selectin (SELE);CD62 antigen-like family member E;Endothelial leukocyte adhesion molecule 1;Leukocyte-endothelial cell adhesion molecule 2;CD62E and ELAM1;ELAM;ESEL;LECAM2
Species	Human
Expression Host	HEK293 Cells
Sequence	Trp22-Pro556
Accession	P16581
Calculated Molecular Weight	58.6 kDa
Observed molecular weight	104 kDa
Tag	C-His

Properties

Purity	> 95 % as determined by reducing SDS-PAGE.
Endotoxin	< 1.0 EU per µg of the protein as determined by the LAL method.
Storage	Generally, lyophilized proteins are stable for up to 12 months when stored at -20 to -80°C. Reconstituted protein solution can be stored at 4-8°C for 2-7 days. Aliquots of reconstituted samples are stable at < -20°C for 3 months.
Shipping	This product is provided as lyophilized powder which is shipped with ice packs.
Formulation	Lyophilized from a 0.2 µm filtered solution of PBS, pH 7.4. Normally 5 % - 8 % trehalose, mannitol and 0.01% Tween80 are added as protectants before lyophilization. Please refer to the specific buffer information in the printed manual.
Reconstitution	Please refer to the printed manual for detailed information.

Data



> 95 % as determined by reducing SDS-PAGE.

Background

SELE is expressed on the surface of endothelial cells and mediates the interaction of leukocytes and platelets with endothelial cells during an inflammatory response. SELE functions as a cell-surface glycoprotein and has a role in immunoadhesion. In addition, SELE may also have a role in capillary morphogenesis.

For Research Use Only

A Reliable Research Partner in Life Science and Medicine

Toll-free: 1-888-852-8623

Web: www.elabscience.com

Tel: 1-832-243-6086

Email: techsupport@elabscience.com

Fax: 1-832-243-6017