

Recombinant Human Follitropin Subunit β /FSHB Protein (His Tag)

Catalog No. PKSH032456

Note: Centrifuge before opening to ensure complete recovery of vial contents.

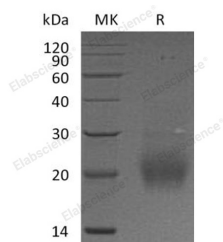
Description

Synonyms	Follitropin Subunit Beta;Follicle-Stimulating Hormone Beta Subunit;FSH-B;FSH-Beta;Follitropin Beta Chain;FSHB
Species	Human
Expression Host	HEK293 Cells
Sequence	Asn19-Glu129
Accession	P01225
Calculated Molecular Weight	13.5 kDa
Observed molecular weight	21 kDa
Tag	C-His
Bioactivity	Not validated for activity

Properties

Purity	> 90 % as determined by reducing SDS-PAGE.
Endotoxin	< 1.0 EU per μ g of the protein as determined by the LAL method.
Storage	Generally, lyophilized proteins are stable for up to 12 months when stored at -20 to -80°C. Reconstituted protein solution can be stored at 4-8°C for 2-7 days. Aliquots of reconstituted samples are stable at < -20°C for 3 months.
Shipping	This product is provided as lyophilized powder which is shipped with ice packs.
Formulation	Lyophilized from a 0.2 μ m filtered solution of PBS, pH 7.4. Normally 5 % - 8 % trehalose, mannitol and 0.01% Tween80 are added as protectants before lyophilization. Please refer to the specific buffer information in the printed manual.
Reconstitution	Please refer to the printed manual for detailed information.

Data



> 90 % as determined by reducing SDS-PAGE.

Background

Follitropin Subunit β (FSHB) is a secreted protein that belongs to the glycoprotein hormones subunit β family. The

For Research Use Only

pituitary glycoprotein hormone family includes follicle-stimulating hormone, luteinizing hormone, chorionic gonadotropin, and thyroid-stimulating hormone. FSHB exists in a heterodimer of a common α chain and an unique β chain that confers biological specificity to thyrotropin, lutropin, follitropin, and gonadotropin. FSHB stimulates development of follicle and spermatogenesis in the reproductive organs. Defects in FSHB are a cause of isolated follicle-stimulating hormone deficiency (IFSHD).