

Recombinant Human ALDOA Protein (His Tag)

Catalog No. PKSH032460

Note: Centrifuge before opening to ensure complete recovery of vial contents.

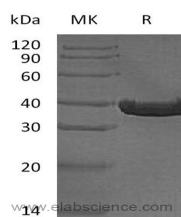
Description

Synonyms	Fructose-Bisphosphate Aldolase A; Lung Cancer Antigen NY-LU-1; Muscle-Type Aldolase; ALDOA; ALDA
Species	Human
Expression Host	E.coli
Sequence	Pro2-Tyr364
Accession	P04075
Calculated Molecular Weight	40.5 kDa
Observed molecular weight	36 kDa
Tag	C-6His

Properties

Purity	> 95 % as determined by reducing SDS-PAGE.
Storage	Store at < -20°C, stable for 6 months. Please minimize freeze-thaw cycles.
Shipping	This product is provided as liquid. It is shipped at frozen temperature with blue ice/gel packs. Upon receipt, store it immediately at < -20°C.
Formulation	Supplied as a 0.2 µm filtered solution of 20mM TrisHCl, 100mM NaCl, 20% Glycerol, pH 8.0.
Reconstitution	Not Applicable

Data



Background

Fructose Bisphosphate Aldolase A (ALDOA) belongs to the class I fructose-bisphosphate aldolase family. ALDOA is a glycolytic enzyme that catalyzes the reversible conversion of fructose-1,6-bisphosphate to glyceraldehyde 3-phosphate and dihydroxyacetone phosphate. In vertebrates, three forms of this ubiquitous glycolytic enzyme are found, Aldolase A in muscle, Aldolase B in liver and aldolase C in brain. Aldolase A Interacts with SNX9 and WAS. Aldolase A deficiency has been associated with myopathy and hemolytic anemia. In addition, Aldolase A plays an important role in glycolysis and gluconeogenesis; it may also act as a scaffolding protein.

For Research Use Only