

Recombinant Human ALDOC Protein (His Tag)

Catalog Number:PKSH032461



Note: Centrifuge before opening to ensure complete recovery of vial contents.

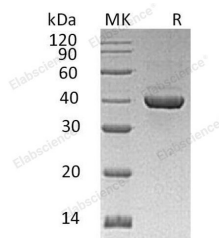
Description

Synonyms	Fructose-bisphosphate aldolase C;Brain-type aldolase;ALDC;Aldo3;Aldolase C;Scrg2;zebrin II
Species	Human
Expression Host	HEK293 Cells
Sequence	Phe2-Tyr364
Accession	P09972
Calculated Molecular Weight	40.3 kDa
Observed molecular weight	40 kDa
Tag	C-His

Properties

Purity	> 95 % as determined by reducing SDS-PAGE.
Endotoxin	< 1.0 EU per µg of the protein as determined by the LAL method.
Storage	Store at < -20°C, stable for 6 months. Please minimize freeze-thaw cycles.
Shipping	This product is provided as liquid. It is shipped at frozen temperature with blue ice/gel packs. Upon receipt, store it immediately at < - 20°C.
Formulation	Supplied as a 0.2 µm filtered solution of 20mM Tris-HCl, 100mM NaCl, 50% Glycerol, pH8.0.
Reconstitution	Not Applicable

Data



> 95 % as determined by reducing SDS-PAGE.

Background

Fructose-bisphosphate aldolase C (ALDOC) belongs to the class I fructose-bisphosphate aldolase family. It is an enzyme that, in humans, is encoded by the ALDOC gene. ALDOC is expressed exclusively in the hippocampus and Purkinje cells of the brain. ALDOC is a glycolytic enzyme which catalyzes the reversible aldol cleavage of fructose-1,6-bisphosphate and fructose 1-phosphate to dihydroxyacetone phosphate and either glyceraldehyde-3-phosphate or glyceraldehydes respectively

For Research Use Only

A Reliable Research Partner in Life Science and Medicine

Toll-free: 1-888-852-8623

Web: www.elabscience.com

Tel: 1-832-243-6086

Email: techsupport@elabscience.com

Fax: 1-832-243-6017