

Recombinant Human GABARAPL1 Protein (His Tag)

Catalog No. PKSH032464

Note: Centrifuge before opening to ensure complete recovery of vial contents.

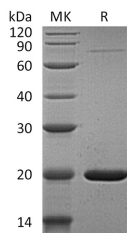
Description

Synonyms	Gamma-Aminobutyric Acid Receptor-Associated Protein-Like 1;Early Estrogen-Regulated Protein;GABA(A) Receptor-Associated Protein-Like 1;Glandular Epithelial Cell Protein 1;GEC-1;GABARAPL1;GEC1
Species	Human
Expression Host	E.coli
Sequence	Met 1-Lys117
Accession	Q9H0R8
Calculated Molecular Weight	16.2 kDa
Observed molecular weight	20 kDa
Tag	N-His
Bioactivity	Not validated for activity

Properties

Purity	> 95 % as determined by reducing SDS-PAGE.
Endotoxin	< 1.0 EU per µg of the protein as determined by the LAL method.
Storage	Generally, lyophilized proteins are stable for up to 12 months when stored at -20 to -80°C. Reconstituted protein solution can be stored at 4-8°C for 2-7 days. Aliquots of reconstituted samples are stable at < -20°C for 3 months.
Shipping	This product is provided as lyophilized powder which is shipped with ice packs.
Formulation	Lyophilized from a 0.2 µm filtered solution of 20mM PB, 150mM NaCl, pH 7.2. Normally 5% - 8% trehalose, mannitol and 0.01% Tween 80 are added as protectants before lyophilization. Please refer to the specific buffer information in the printed manual.
Reconstitution	Please refer to the printed manual for detailed information.

Data



> 95 % as determined by reducing SDS-PAGE.

Background

For Research Use Only

Gamma-Aminobutyric Acid Receptor-Associated Protein-Like 1 (GABARAPL1) is a cytoplasmic protein that belongs to the MAP1 LC3 family. GABARAPL1 is expressed at very high levels in the brain, heart, peripheral blood leukocytes, liver, kidney, placenta, and skeletal muscle. It can interact with GABRG2, OPRK1 and β -Tubulin. GABARAPL1 increases cell-surface expression of kappa-type opioid receptor through facilitating anterograde intracellular trafficking of the receptor.