

# Recombinant Human GABARAPL1 Protein (His Tag)

Catalog Number:PKSH032464



**Note:** Centrifuge before opening to ensure complete recovery of vial contents.

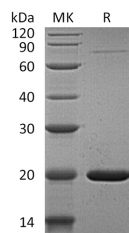
## Description

<b>Synonyms</b>	Gamma-Aminobutyric Acid Receptor-Associated Protein-Like 1;Early Estrogen-Regulated Protein;GABA(A) Receptor-Associated Protein-Like 1;Glandular Epithelial Cell Protein 1;GEC-1;GABARAPL1;GEC1
<b>Species</b>	Human
<b>Expression Host</b>	E.coli
<b>Sequence</b>	Met 1-Lys117
<b>Accession</b>	Q9H0R8
<b>Calculated Molecular Weight</b>	16.2 kDa
<b>Observed molecular weight</b>	20 kDa
<b>Tag</b>	N-His

## Properties

<b>Purity</b>	> 95 % as determined by reducing SDS-PAGE.
<b>Endotoxin</b>	< 1.0 EU per µg of the protein as determined by the LAL method.
<b>Storage</b>	Generally, lyophilized proteins are stable for up to 12 months when stored at -20 to -80°C. Reconstituted protein solution can be stored at 4-8°C for 2-7 days. Aliquots of reconstituted samples are stable at < -20°C for 3 months.
<b>Shipping</b>	This product is provided as lyophilized powder which is shipped with ice packs.
<b>Formulation</b>	Lyophilized from a 0.2 µm filtered solution of 20mM PB, 150mM NaCl, pH 7.2. Normally 5 % - 8 % trehalose, mannitol and 0.01% Tween80 are added as protectants before lyophilization. Please refer to the specific buffer information in the printed man
<b>Reconstitution</b>	Please refer to the printed manual for detailed information.

## Data



> 95 % as determined by reducing SDS-PAGE.

## Background

Gamma-Aminobutyric Acid Receptor-Associated Protein-Like 1 (GABARAPL1) is a cytoplasmic protein that belongs to the MAP1 LC3 family. GABARAPL1 is expressed at very high levels in the brain, heart, peripheral blood leukocytes, liver, kidney, placenta, and skeletal muscle. It can interact with GABRG2, OPRK1 and  $\beta$ -Tubulin. GABARAPL1 increases cell-surface expression of kappa-type opioid receptor through facilitating anterograde intracellular trafficking of the receptor.

## For Research Use Only

A Reliable Research Partner in Life Science and Medicine

Toll-free: 1-888-852-8623

Web: [www.elabscience.com](http://www.elabscience.com)

Tel: 1-832-243-6086

Email: [techsupport@elabscience.com](mailto:techsupport@elabscience.com)

Fax: 1-832-243-6017