

Recombinant Human GALM Protein (His Tag)

Catalog No. PKSH032469

Note: Centrifuge before opening to ensure complete recovery of vial contents.

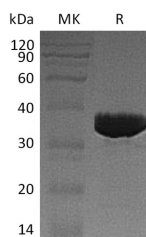
Description

| | |
|------------------------------------|--|
| Synonyms | Aldose 1-Epimerase;Galactose Mutarotase;GALM |
| Species | Human |
| Expression Host | E.coli |
| Sequence | Ala2-Ala342 |
| Accession | Q96C23 |
| Calculated Molecular Weight | 38.8 kDa |
| Observed molecular weight | 34 kDa |
| Tag | C-His |
| Bioactivity | Not validated for activity |

Properties

| | |
|-----------------------|--|
| Purity | > 95 % as determined by reducing SDS-PAGE. |
| Endotoxin | < 1.0 EU per µg of the protein as determined by the LAL method. |
| Storage | Store at < -20°C, stable for 6 months. Please minimize freeze-thaw cycles. |
| Shipping | This product is provided as liquid. It is shipped at frozen temperature with blue ice/gel packs. Upon receipt, store it immediately at < - 20°C. |
| Formulation | Supplied as a 0.2 µm filtered solution of PBS, pH7.4. |
| Reconstitution | Not Applicable |

Data



> 95 % as determined by reducing SDS-PAGE.

Background

Galactose Mutarotase (GALM) is a cytoplasmic enzyme that belongs to the Aldose Epimerase family. GALM is a Mutarotase that converts α -Aldose to the β -Anomer. GALM is active on D-Glucose, L-Arabinose, D-Xylose, D-Galactose, Maltose and Lactose. GALM may be required for normal Galactose metabolism by maintaining the equilibrium of α - and β - anomers of Galactose.

For Research Use Only