

Recombinant Human Galectin-14/LGALS14 Protein (His Tag)



Catalog Number:PKSH032472

Note: Centrifuge before opening to ensure complete recovery of vial contents.

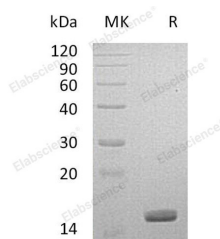
Description

Synonyms	Placental Protein 13-Like;Charcot-Leyden Crystal Protein 2;CLC2;Galectin-14;Gal-14;LGALS14;PPL13
Species	Human
Expression Host	HEK293 Cells
Sequence	Met 1-Asp139
Accession	AAH22257.1
Calculated Molecular Weight	17.1 kDa
Observed molecular weight	16 kDa
Tag	C-His

Properties

Purity	> 95 % as determined by reducing SDS-PAGE.
Endotoxin	< 1.0 EU per µg of the protein as determined by the LAL method.
Storage	Store at < -20°C, stable for 6 months. Please minimize freeze-thaw cycles.
Shipping	This product is provided as liquid. It is shipped at frozen temperature with blue ice/gel packs. Upon receipt, store it immediately at < - 20°C.
Formulation	Supplied as a 0.2 µm filtered solution of 20mM Tris-HCl, 100mM NaCl, 1mM DTT, 20% Glycerol, pH 8.0.
Reconstitution	Not Applicable

Data



> 95 % as determined by reducing SDS-PAGE.

Background

Galectin-14 is a member of the Galectin family of carbohydrate binding proteins. The members of Galectin family contain one or two carbohydrate recognition domains, which can bind β -Galactoside. LGALS14 is expressed intracellularly in placenta and eosinophils, and is released by eosinophils following allergen stimulation. LGALS14 may be involved in the development of allergic inflammation. Two alternatively spliced transcript variants encoding distinct isoforms have been observed.

For Research Use Only

A Reliable Research Partner in Life Science and Medicine

Toll-free: 1-888-852-8623

Web: www.elabscience.com

Tel: 1-832-243-6086

Email: techsupport@elabscience.com

Fax: 1-832-243-6017