

Recombinant Human LGALSL Protein (His Tag)

Catalog Number:PKSH032477



Note: Centrifuge before opening to ensure complete recovery of vial contents.

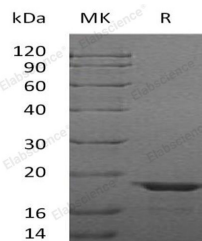
Description

| | |
|------------------------------------|-------------------------------------------------------------------------------------|
| Synonyms | Galectin-Related Protein;Lectin Galactoside-Binding-Like Protein;LGALSL;GRP;HSPC159 |
| Species | Human |
| Expression Host | E.coli |
| Sequence | Ala2-Ser172 |
| Accession | Q3ZCW2 |
| Calculated Molecular Weight | 20.0 kDa |
| Observed molecular weight | 18 kDa |
| Tag | C-His |

Properties

| | |
|-----------------------|--------------------------------------------------------------------------------------------------------------------------------------------------|
| Purity | > 95 % as determined by reducing SDS-PAGE. |
| Endotoxin | < 1.0 EU per µg of the protein as determined by the LAL method. |
| Storage | Store at < -20°C, stable for 6 months. Please minimize freeze-thaw cycles. |
| Shipping | This product is provided as liquid. It is shipped at frozen temperature with blue ice/gel packs. Upon receipt, store it immediately at < - 20°C. |
| Formulation | Supplied as a 0.2 µm filtered solution of 20mM Tris-HCl, 100mM NaCl, pH 8.0. |
| Reconstitution | Not Applicable |

Data



> 95 % as determined by reducing SDS-PAGE.

Background

Galectin-Related Protein (LGALSL) is a 172 amino acid protein that contains one Galectin domain. LGALSL does not appear to bind carbohydrates or lactose as the critical residues required for binding are not conserved. LGALSL may play a significant role in stimulating smooth muscle growth in developing alveolar wall vessels and the development of pulmonary capillaries.

For Research Use Only

A Reliable Research Partner in Life Science and Medicine

Toll-free: 1-888-852-8623

Web: www.elabscience.com

Tel: 1-832-243-6086

Email: techsupport@elabscience.com

Fax: 1-832-243-6017