

Recombinant Human Glucagon/GCG Protein (His Tag)



Catalog Number:PKSH032491

Note: Centrifuge before opening to ensure complete recovery of vial contents.

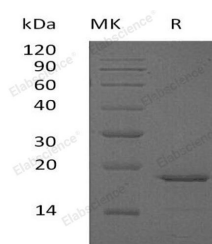
Description

Synonyms	Glucagon;Glicentin;Glicentin-Related Polypeptide;GRPP;Oxyntomodulin;OXM;OXY;Glucagon;Glucagon-Like Peptide 1;GLP-1;Incretin Hormone;Glucagon-like Peptide 1;GLP-1;Glucagon-Like Peptide 2;GLP-2;GCG
Species	Human
Expression Host	HEK293 Cells
Sequence	Arg21-Lys180
Accession	P01275
Calculated Molecular Weight	18.6 kDa
Observed molecular weight	19 kDa
Tag	C-His

Properties

Purity	> 95 % as determined by reducing SDS-PAGE.
Endotoxin	< 1.0 EU per µg of the protein as determined by the LAL method.
Storage	Store at < -20°C, stable for 6 months. Please minimize freeze-thaw cycles.
Shipping	This product is provided as liquid. It is shipped at frozen temperature with blue ice/gel packs. Upon receipt, store it immediately at < - 20°C.
Formulation	Supplied as a 0.2 µm filtered solution of 20mM Tris-HCl, 200mM NaCl, 1mM DTT, 50% Glycerol, pH 8.0.
Reconstitution	Not Applicable

Data



> 95 % as determined by reducing SDS-PAGE.

Background

Glucagon is a secreted protein and belongs to the glucagon family. Glucagon can be cleaved into 8 chains, playing an important role in initiating and maintaining hyperglycemic conditions in diabetes. Glucagon can regulate blood glucose by decreasing glycolysis and increasing gluconeogenesis. In addition, Glucagon is involved in initiating and maintaining hyperglycemic conditions in diabetes. Glucagon release is stimulated by hypoglycemia and inhibited by hyperglycemia, insulin, and somatostatin. In the glucagon antagonist, His-53 and Phe-58 are missing. This antagonist has been successfully utilized to reduce glucose concentration in vivo.

For Research Use Only

A Reliable Research Partner in Life Science and Medicine

Toll-free: 1-888-852-8623

Web: www.elabscience.com

Tel: 1-832-243-6086

Email: techsupport@elabscience.com

Fax: 1-832-243-6017