

Recombinant Human GSS Protein (His Tag)

Catalog Number:PKSH032497



Note: Centrifuge before opening to ensure complete recovery of vial contents.

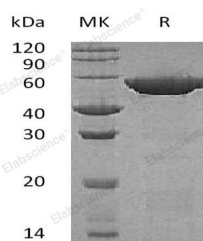
Description

Synonyms	Glutathione Synthetase;GSH Synthetase;GSH-S;Glutathione Synthase;GSS
Species	Human
Expression Host	E.coli
Sequence	Ala2-Val474
Accession	P48637
Calculated Molecular Weight	53.5 kDa
Observed molecular weight	55 kDa
Tag	C-His

Properties

Purity	> 95 % as determined by reducing SDS-PAGE.
Endotoxin	< 1.0 EU per µg of the protein as determined by the LAL method.
Storage	Store at < -20°C, stable for 6 months. Please minimize freeze-thaw cycles.
Shipping	This product is provided as liquid. It is shipped at frozen temperature with blue ice/gel packs. Upon receipt, store it immediately at < - 20°C.
Formulation	Supplied as a 0.2 µm filtered solution of 20mM Tris-HCl, 200mM NaCl, pH 7.5.
Reconstitution	Not Applicable

Data



> 95 % as determined by reducing SDS-PAGE.

Background

Glutathione Synthetase belongs to the eukaryotic GSH synthase family. Glutathione Synthetase is the second enzyme in the glutathione biosynthesis pathway. It catalyses the condensation of gamma-glutamylcysteine and glycine to form glutathione. Glutathione play an important role in a variety of biological functions, including detoxification of xenobiotics, protection of cells from oxidative damage by free radicals, and membrane transport. The protein functions as a homodimer to catalyze the second step of glutathione biosynthesis, which is the ATP-dependent conversion of gamma-L-glutamyl-L-cysteine to glutathione. Defects in Glutathione Synthetase can also cause the glutathione synthetase deficiency of erythrocytes, which is a mild form causing hemolytic anemia.

For Research Use Only

A Reliable Research Partner in Life Science and Medicine

Toll-free: 1-888-852-8623

Web: www.elabscience.com

Tel: 1-832-243-6086

Email: techsupport@elabscience.com

Fax: 1-832-243-6017