

Recombinant Human PLA2G16 Protein (His Tag)

Catalog Number:PKSH032509



Note: Centrifuge before opening to ensure complete recovery of vial contents.

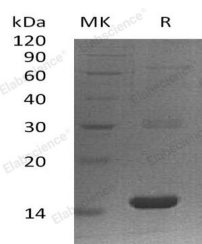
Description

Synonyms	Group XVI Phospholipase A1/A2;Adipose-Specific Phospholipase A2;AdPLA;H-Rev 107 Protein Homolog;HRAS-Like Suppressor 1;HRAS-Like Suppressor 3;HRSL3;HREV107-1;HREV107-3;Renal Carcinoma Antigen NY-REN-65;PLA2G16;HRASLS3;HREV107
Species	Human
Expression Host	E.coli
Sequence	Asp12-Asp132
Accession	P53816
Calculated Molecular Weight	14-17 kDa
Observed molecular weight	15 kDa
Tag	N-His

Properties

Purity	> 95 % as determined by reducing SDS-PAGE.
Endotoxin	< 1.0 EU per µg of the protein as determined by the LAL method.
Storage	Store at < -20°C, stable for 6 months. Please minimize freeze-thaw cycles.
Shipping	This product is provided as liquid. It is shipped at frozen temperature with blue ice/gel packs. Upon receipt, store it immediately at < - 20°C.
Formulation	Supplied as a 0.2 µm filtered solution of 20mM Tris-HCl, 50mM NaCl, 1mM EDTA, pH8.0.
Reconstitution	Not Applicable

Data



> 95 % as determined by reducing SDS-PAGE.

Background

Group XVI Phospholipase A1/A2 (PLA2G16) belongs to the H-rev 107 family. PLA2G16 is expressed in a number of human tumors including ovarian carcinomas, lung carcinomas. PLA2G16 is involved in the regulation of differentiation and survival. PLA2G16 regulates adipocyte lipolysis and release of fatty acids through a G-protein coupled pathway involving prostaglandin and EP3. It has also been reported to play a crucial role in the development of obesity in mouse models.

For Research Use Only

A Reliable Research Partner in Life Science and Medicine

Toll-free: 1-888-852-8623

Web: www.elabscience.com

Tel: 1-832-243-6086

Email: techsupport@elabscience.com

Fax: 1-832-243-6017