

Recombinant Human Somatoliberin/GHRH Protein (Fc Tag)



Catalog Number:PKSH032514

Note: Centrifuge before opening to ensure complete recovery of vial contents.

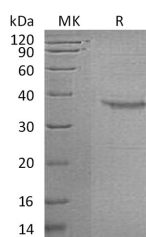
Description

Synonyms	Somatoliberin;Growth hormone-releasing factor;Somatocrinin;Somatorelin;Growth hormone-releasing hormone;GHRH;GHRF
Species	Human
Expression Host	HEK293 Cells
Sequence	Pro21-Leu75
Accession	P01286
Calculated Molecular Weight	33.4 kDa
Observed molecular weight	38 kDa
Tag	C-Fc

Properties

Purity	> 95 % as determined by reducing SDS-PAGE.
Endotoxin	< 1.0 EU per µg of the protein as determined by the LAL method.
Storage	Generally, lyophilized proteins are stable for up to 12 months when stored at -20 to -80°C. Reconstituted protein solution can be stored at 4-8°C for 2-7 days. Aliquots of reconstituted samples are stable at < -20°C for 3 months.
Shipping	This product is provided as lyophilized powder which is shipped with ice packs.
Formulation	Lyophilized from a 0.2 µm filtered solution of PBS, pH 7.4. Normally 5 % - 8 % trehalose, mannitol and 0.01% Tween80 are added as protectants before lyophilization. Please refer to the specific buffer information in the printed manual.
Reconstitution	Please refer to the printed manual for detailed information.

Data



> 95 % as determined by reducing SDS-PAGE.

Background

Growth-hormone-releasing hormone (GHRH) is a releasing hormone for growth hormone. It is a 44-amino acid peptide hormone produced in the arcuate nucleus of the hypothalamus. GHRH first appears in the human hypothalamus between 18 and 29 weeks of gestation, which corresponds to the start of production of growth hormone and other somatotropes in fetuses. GRF is released by the hypothalamus and acts on the adenohypophyse to stimulate the secretion of growth hormone.

For Research Use Only

A Reliable Research Partner in Life Science and Medicine

Toll-free: 1-888-852-8623

Web: www.elabscience.com

Tel: 1-832-243-6086

Email: techsupport@elabscience.com

Fax: 1-832-243-6017