

# Recombinant Human HSPB7 Protein (His Tag)

Catalog Number:PKSH032524



**Note:** Centrifuge before opening to ensure complete recovery of vial contents.

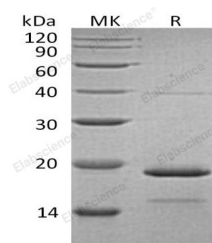
## Description

<b>Synonyms</b>	Pregnancy specific beta-1-glycoprotein 2;PSBG2;Pregnancy-specific beta-1 glycoprotein E;pregnancy-specific beta-1-glycoprotein 2;pregnancy-specific beta-1-glycoprotein 7;PSG2
<b>Species</b>	Human
<b>Expression Host</b>	E.coli
<b>Sequence</b>	Met 1-Ile170
<b>Accession</b>	Q9UBY9
<b>Calculated Molecular Weight</b>	19.6 kDa
<b>Observed molecular weight</b>	20-25 kDa
<b>Tag</b>	C-His

## Properties

<b>Purity</b>	> 95 % as determined by reducing SDS-PAGE.
<b>Endotoxin</b>	< 1.0 EU per µg of the protein as determined by the LAL method.
<b>Storage</b>	Store at < -20°C, stable for 6 months. Please minimize freeze-thaw cycles.
<b>Shipping</b>	This product is provided as liquid. It is shipped at frozen temperature with blue ice/gel packs. Upon receipt, store it immediately at < - 20°C.
<b>Formulation</b>	Supplied as a 0.2 µm filtered solution of 20mM Tris-HCl, 0.2M NaCl, 2mM DTT, 50%Glycerol, pH 8.0.
<b>Reconstitution</b>	Not Applicable

## Data



> 95 % as determined by reducing SDS-PAGE.

## Background

PSG2 is a secreted protein that in humans is encoded by the *PSG2* gene. It is a member of the human pregnancy-specific glycoproteins (PSGs) family. These proteins are synthesized in large amounts by placental trophoblasts and released into the maternal circulation during pregnancy. PSG2 consist of a single N domain, with structural similarity to the immunoglobulin variable domains, followed by a variable number of immunoglobulin constant-like A and/or B domains. It has an arg-gly-asp (RGD) motif, which has been shown to function as an adhesion recognition signal for several integrins, in the N-terminal domain.

## For Research Use Only

A Reliable Research Partner in Life Science and Medicine

Toll-free: 1-888-852-8623

Web: [www.elabscience.com](http://www.elabscience.com)

Tel: 1-832-243-6086

Email: [techsupport@elabscience.com](mailto:techsupport@elabscience.com)

Fax: 1-832-243-6017