

# Recombinant Human HSPB8 Protein (His Tag)

Catalog Number:PKSH032525



**Note:** Centrifuge before opening to ensure complete recovery of vial contents.

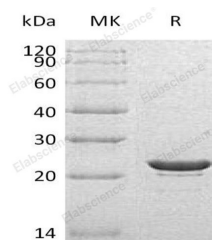
## Description

<b>Synonyms</b>	Heat shock protein beta-8;HspB8;Alpha-crystallin C chain;E2-induced gene 1 protein;Protein kinase H11;Small stress protein-like protein HSP22;HSPB8;CRYAC;E2IG1;HSP22
<b>Species</b>	Human
<b>Expression Host</b>	E.coli
<b>Sequence</b>	Met 1-Thr196
<b>Accession</b>	Q9UJY1
<b>Calculated Molecular Weight</b>	22.7 kDa
<b>Observed molecular weight</b>	23 kDa
<b>Tag</b>	C-His

## Properties

<b>Purity</b>	> 95 % as determined by reducing SDS-PAGE.
<b>Endotoxin</b>	< 1.0 EU per µg of the protein as determined by the LAL method.
<b>Storage</b>	Store at < -20°C, stable for 6 months. Please minimize freeze-thaw cycles.
<b>Shipping</b>	This product is provided as liquid. It is shipped at frozen temperature with blue ice/gel packs. Upon receipt, store it immediately at < - 20°C.
<b>Formulation</b>	Supplied as a 0.2 µm filtered solution of 20mM PB, 150mM NaCl, 5mM EDTA, pH 7.4.
<b>Reconstitution</b>	Not Applicable

## Data



> 95 % as determined by reducing SDS-PAGE.

## Background

Heat shock protein beta-8 (HSPB8) belongs to the small heat shock protein (HSP20) family. This protein can be induced by 17-beta-estradiol, and is predominantly expressed in skeletal muscle and heat, mainly located in the cytoplasm and nucleus. HSPB8 usually exists in monomer, it can interact with HSPB1 and DNAJB6. HSPB8 displays temperature-dependent chaperone activity, appears to be involved in regulation of cell proliferation, apoptosis, and carcinogenesis, and mutations in this gene have been associated with different neuromuscular diseases, including Charcot-Marie-Tooth disease.

## For Research Use Only

A Reliable Research Partner in Life Science and Medicine

Toll-free: 1-888-852-8623

Web: [www.elabscience.com](http://www.elabscience.com)

Tel: 1-832-243-6086

Email: [techsupport@elabscience.com](mailto:techsupport@elabscience.com)

Fax: 1-832-243-6017