

Recombinant Human HCLS1 Protein (His Tag)

Catalog Number:PKSH032527



Note: Centrifuge before opening to ensure complete recovery of vial contents.

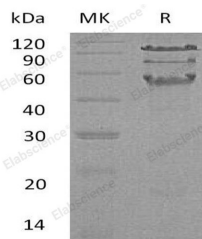
Description

Synonyms	Hematopoietic lineage cell-specific protein;Hematopoietic cell-specific LYN substrate 1;LckBP1;p75
Species	Human
Expression Host	HEK293 Cells
Sequence	Met 1-Glu486
Accession	AAH16758.1
Calculated Molecular Weight	55.0 kDa
Observed molecular weight	55-110 kDa
Tag	C-His

Properties

Purity	> 95 % as determined by reducing SDS-PAGE.
Endotoxin	< 1.0 EU per µg of the protein as determined by the LAL method.
Storage	Store at < -20°C, stable for 6 months. Please minimize freeze-thaw cycles.
Shipping	This product is provided as liquid. It is shipped at frozen temperature with blue ice/gel packs. Upon receipt, store it immediately at < - 20°C.
Formulation	Supplied as a 0.2 µm filtered solution of 20mM PB, 150mM NaCl, pH 7.4.
Reconstitution	Not Applicable

Data



> 95 % as determined by reducing SDS-PAGE.

Background

Hematopoietic lineage cell-specific protein (HCLS1) is a protein that in humans is encoded by the HCLS1 gene. It is expressed only in tissues and cells of hematopoietic origin. It is substrate of the antigen receptor-coupled tyrosine kinase and plays a role in antigen receptor signaling for both clonal expansion and deletion in lymphoid cells. It may also be involved in the regulation of gene expression.

For Research Use Only

A Reliable Research Partner in Life Science and Medicine

Toll-free: 1-888-852-8623

Web: www.elabscience.com

Tel: 1-832-243-6086

Email: techsupport@elabscience.com

Fax: 1-832-243-6017