

## Recombinant Human HGFR/c-MET Protein (Fc Tag)

**Catalog No.** PKSH032536

**Note:** Centrifuge before opening to ensure complete recovery of vial contents.

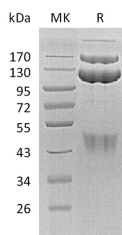
### Description

<b>Synonyms</b>	Hepatocyte growth factor receptor;HGF receptor;HGF/SF receptor;Proto-oncogene c-Met;Scatter factor receptor;SF receptor;Tyrosine-protein kinase Met;MET
<b>Species</b>	Human
<b>Expression Host</b>	HEK293 Cells
<b>Sequence</b>	Glu25-Thr932
<b>Accession</b>	P08581
<b>Calculated Molecular Weight</b>	128.4 kDa
<b>Observed molecular weight</b>	170&100-130&45-50 kDa
<b>Tag</b>	C-Fc
<b>Bioactivity</b>	Not validated for activity

### Properties

<b>Purity</b>	> 95 % as determined by reducing SDS-PAGE.
<b>Endotoxin</b>	< 1.0 EU per µg of the protein as determined by the LAL method.
<b>Storage</b>	Generally, lyophilized proteins are stable for up to 12 months when stored at -20 to -80°C. Reconstituted protein solution can be stored at 4-8°C for 2-7 days. Aliquots of reconstituted samples are stable at < -20°C for 3 months.
<b>Shipping</b>	This product is provided as lyophilized powder which is shipped with ice packs.
<b>Formulation</b>	Lyophilized from a 0.2 µm filtered solution of PBS, pH 7.4. Normally 5 % - 8 % trehalose, mannitol and 0.01% Tween80 are added as protectants before lyophilization. Please refer to the specific buffer information in the printed manual.
<b>Reconstitution</b>	Please refer to the printed manual for detailed information.

### Data



> 95 % as determined by reducing SDS-PAGE.

### Background

Hepatocyte growth factor receptor (HGF R) is a glycosylated receptor tyrosine kinase that plays a central role in epithelial

### For Research Use Only

morphogenesis and cancer development. HGF R is synthesized as a single chain precursor which undergoes cotranslational proteolytic cleavage. Mature HGF R is a disulfide-linked dimer composed of a 50 kDa extracellular  $\alpha$  chain and a 145 kDa transmembrane  $\beta$  chain. Proteolysis and alternate splicing generate additional forms of human HGF R which either lack of the kinase domain; consist of secreted extracellular domains; or are deficient in proteolytic separation of the  $\alpha$  and  $\beta$  chains. The sema domain; which is formed by both  $\alpha$  and  $\beta$  chains of HGF R; mediates both ligand binding and receptor dimerization. HGF stimulation induces HGF R downregulation via internalization and proteasomedependent degradation. Paracrine induction of epithelial cell scattering and branching tubulogenesis results from the stimulation of HGF R on undifferentiated epithelium by HGF released from neighboring mesenchymal cells.