

Recombinant Human HPCAL1 Protein (His Tag)

Catalog Number:PKSH032547



Note: Centrifuge before opening to ensure complete recovery of vial contents.

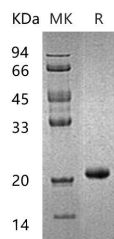
Description

Synonyms	Hippocalcin-Like Protein 1;Calcium-Binding Protein BDR-1;HLP2;Visinin-Like Protein 3;VILIP-3;HPCAL1;BDR1
Species	Human
Expression Host	E.coli
Sequence	Met 1-Phe193
Accession	P37235
Calculated Molecular Weight	24.5 kDa
Observed molecular weight	21 kDa
Tag	N-His

Properties

Purity	> 95 % as determined by reducing SDS-PAGE.
Endotoxin	< 1.0 EU per µg of the protein as determined by the LAL method.
Storage	Store at < -20°C, stable for 6 months. Please minimize freeze-thaw cycles.
Shipping	This product is provided as liquid. It is shipped at frozen temperature with blue ice/gel packs. Upon receipt, store it immediately at < - 20°C.
Formulation	Supplied as a 0.2 µm filtered solution of 20mM Tris-HCl, 200mM NaCl, 1mM DTT, 10% Glycerol, pH 8.0.
Reconstitution	Not Applicable

Data



> 95 % as determined by reducing SDS-PAGE.

Background

Hippocalcin-Like Protein 1 (HPCAL1) is a neuron-specific calcium-binding member of the recoverin family which found in the retina and brain. HPCAL1 contains four EF-hand domains and it is highly similar to human hippocalcin protein. HPCAL1 is involved in the calcium-dependent regulation of rhodopsin phosphorylation. In addition, it may be of relevance for neuronal signalling in the central nervous system.

For Research Use Only

A Reliable Research Partner in Life Science and Medicine

Toll-free: 1-888-852-8623

Web: www.elabscience.com

Tel: 1-832-243-6086

Email: techsupport@elabscience.com

Fax: 1-832-243-6017