

Recombinant Human ASF1A Protein (His&T7 Tag)

Catalog Number:PKSH032549



Note: Centrifuge before opening to ensure complete recovery of vial contents.

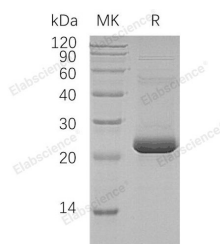
Description

Synonyms	Histone Chaperone ASF1A;Anti-Silencing Function Protein 1 Homolog A;hAsf1;hAsf1a;CCG1-Interacting Factor A;CIA;hCIA;ASF1A
Species	Human
Expression Host	E.coli
Sequence	Met 1-Met204
Accession	Q9Y294
Calculated Molecular Weight	25.4 kDa
Observed molecular weight	22 kDa
Tag	N-T7 & C-His

Properties

Purity	> 95 % as determined by reducing SDS-PAGE.
Endotoxin	< 1.0 EU per µg of the protein as determined by the LAL method.
Storage	Generally, lyophilized proteins are stable for up to 12 months when stored at -20 to -80°C. Reconstituted protein solution can be stored at 4-8°C for 2-7 days. Aliquots of reconstituted samples are stable at < -20°C for 3 months.
Shipping	This product is provided as lyophilized powder which is shipped with ice packs.
Formulation	Lyophilized from a 0.2 µm filtered solution of 20mM Tris-HCl, 1mM DTT, 150mM NaCl, pH 8.0. Normally 5 % - 8 % trehalose, mannitol and 0.01 % Tween80 are added as protectants before lyophilization. Please refer to the specific buffer information in
Reconstitution	Please refer to the printed manual for detailed information.

Data



> 95 % as determined by reducing SDS-PAGE.

Background

Human Histone Chaperone ASF1A (ASF1A) belongs to the H3/H4 family of histone chaperone proteins. ASF1A is ubiquitously expressed in many cells and tissues, interacting with histones H3 and H4. ASF1A cooperates with Chromatin Assembly Factor 1 to promote replication-dependent chromatin assembly and with HIRA to promote replication-independent chromatin assembly. In addition, ASF1A is necessary for the formation of senescence-associated heterochromatin foci (SAHF) and efficient senescence-associated cell cycle exit.

For Research Use Only

A Reliable Research Partner in Life Science and Medicine

Toll-free: 1-888-852-8623

Web: www.elabscience.com

Tel: 1-832-243-6086

Email: techsupport@elabscience.com

Fax: 1-832-243-6017