

Recombinant Human IGF2BP2 Protein (His Tag, N-T7 Tag)



Catalog Number:PKSH032557

Note: Centrifuge before opening to ensure complete recovery of vial contents.

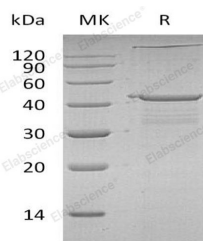
Description

Synonyms	Insulin-Like Growth Factor 2 mRNA-Binding Protein 2;IGF2 mRNA-Binding Protein 2;IMP-2;Hepatocellular Carcinoma Autoantigen p62;IGF-II mRNA-Binding Protein 2;VICKZ Family Member 2;IGF2BP2;IMP2;VICKZ2
Species	Human
Expression Host	E.coli
Sequence	Met 1-Thr 220
Accession	Q9Y6M1
Calculated Molecular Weight	27.2 kDa
Observed molecular weight	43 kDa
Tag	N-T7 & C-His

Properties

Purity	> 90 % as determined by reducing SDS-PAGE.
Endotoxin	< 1.0 EU per µg of the protein as determined by the LAL method.
Storage	Generally, lyophilized proteins are stable for up to 12 months when stored at -20 to -80°C. Reconstituted protein solution can be stored at 4-8°C for 2-7 days. Aliquots of reconstituted samples are stable at < -20°C for 3 months.
Shipping	This product is provided as lyophilized powder which is shipped with ice packs.
Formulation	Lyophilized from a 0.2 µm filtered solution of PBS, pH 7.4. Normally 5 % - 8 % trehalose, mannitol and 0.01% Tween80 are added as protectants before lyophilization. Please refer to the specific buffer information in the printed manual.
Reconstitution	Please refer to the printed manual for detailed information.

Data



> 90 % as determined by reducing SDS-PAGE.

Background

Insulin-Like Growth Factor 2 mRNA-Binding Protein 2 (IGFBP2) belongs to the RRM IMP/VICKZ family. IGFBP2 is a cytoplasmic protein and contains four KH domains and two RRM (RNA recognition motif) domains. IGF2BP2 binds to the 5'-UTR of the Insulin-Like Growth Factor 2 (IGF2) mRNA. This binding is isoform-specific. IGF2BP2 may regulate translation of target mRNAs. Genetic variation at the IGF2BP2 gene has been associated with type 2 diabetes (T2D) by genome-wide association studies and by replication analyses.

For Research Use Only

A Reliable Research Partner in Life Science and Medicine

Toll-free: 1-888-852-8623

Web: www.elabscience.com

Tel: 1-832-243-6086

Email: techsupport@elabscience.com

Fax: 1-832-243-6017