

# Recombinant Human IL1R2/CD121b Protein (Fc Tag)

Catalog Number:PKSH032561



**Note:** Centrifuge before opening to ensure complete recovery of vial contents.

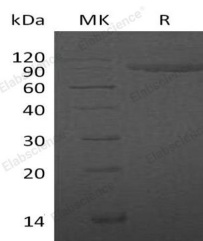
## Description

<b>Synonyms</b>	CD121b;CDw121b;IL-1R-2;IL-1RT-2;IL-1RT2;IL1R2c;IL1RB;Interleukin-1 receptor type 2;IL-1R-2;CD121 antigen-like family member B;CDw121b;IL-1 type II receptor;Interleukin-1 receptor beta;IL-1R-beta;Interleukin-1 receptor type I
<b>Species</b>	Human
<b>Expression Host</b>	HEK293 Cells
<b>Sequence</b>	Phe14-Glu343
<b>Accession</b>	P27930
<b>Calculated Molecular Weight</b>	64.5 kDa
<b>Observed molecular weight</b>	80-95 kDa
<b>Tag</b>	C-Fc

## Properties

<b>Purity</b>	> 95 % as determined by reducing SDS-PAGE.
<b>Endotoxin</b>	< 1.0 EU per µg of the protein as determined by the LAL method.
<b>Storage</b>	Generally, lyophilized proteins are stable for up to 12 months when stored at -20 to -80°C. Reconstituted protein solution can be stored at 4-8°C for 2-7 days. Aliquots of reconstituted samples are stable at < -20°C for 3 months.
<b>Shipping</b>	This product is provided as lyophilized powder which is shipped with ice packs.
<b>Formulation</b>	Lyophilized from a 0.2 µm filtered solution of PBS, pH 7.4. Normally 5 % - 8 % trehalose, mannitol and 0.01% Tween80 are added as protectants before lyophilization. Please refer to the specific buffer information in the printed manual.
<b>Reconstitution</b>	Please refer to the printed manual for detailed information.

## Data



> 95 % as determined by reducing SDS-PAGE.

## Background

Interleukin-1 receptor type 2 (IL1R2) belongs to the interleukin-1 receptor family. Two distinct types of IL1 receptors which are able to bind IL1 specifically have been identified, designated as IL1RI (IL1RA) and IL1RII (IL1RB). IL1 receptor type II is a 68 kDa transmembrane protein found on B lymphocytes, neutrophils, monocytes, large granular leukocytes and endothelial cells. IL1R2 is non-signaling receptor for IL1A, IL1B and IL1RN, reduces IL1B activities. IL1R2 serves as a decoy receptor by competitive binding to IL1B and preventing its binding to IL1R1. IL1R2 modulates cellular response through non-signaling association with IL1RAP after binding to IL1B. IL1R2 (membrane and secreted

## For Research Use Only

A Reliable Research Partner in Life Science and Medicine

Toll-free: 1-888-852-8623

Web: [www.elabscience.com](http://www.elabscience.com)

Tel: 1-832-243-6086

Email: [techsupport@elabscience.com](mailto:techsupport@elabscience.com)

Fax: 1-832-243-6017

# Recombinant Human IL1R2/CD121b Protein (Fc Tag)

Catalog Number:PKSH032561



forms) preferentially binds IL1B and poorly IL1A and IL1RN. The secreted IL1R2 recruits secreted IL1RAP with high affinity; this complex formation may be the dominant mechanism for neutralization of IL1B by secreted/soluble receptors.

---

## For Research Use Only

A Reliable Research Partner in Life Science and Medicine

Toll-free: 1-888-852-8623

Tel: 1-832-243-6086

Fax: 1-832-243-6017

Web: [www.elabscience.com](http://www.elabscience.com)

Email: [techsupport@elabscience.com](mailto:techsupport@elabscience.com)