

## Recombinant Human IL-1RL2 Protein (Fc Tag)

Catalog No. PKSH032563

*Note:* Centrifuge before opening to ensure complete recovery of vial contents.

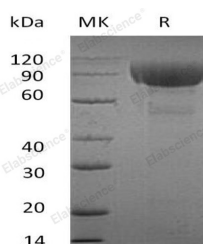
### Description

<b>Synonyms</b>	Interleukin-1 receptor-like 2;IL1RL2;IL-36 receptor;IL-36R;IL-1Rrp2;IL1R-rp2;
<b>Species</b>	Human
<b>Expression Host</b>	HEK293 Cells
<b>Sequence</b>	Asp20-Tyr337
<b>Accession</b>	Q9HB29
<b>Calculated Molecular Weight</b>	63.1 kDa
<b>Observed molecular weight</b>	80-110 kDa
<b>Tag</b>	C-Fc
<b>Bioactivity</b>	Not validated for activity

### Properties

<b>Purity</b>	> 95 % as determined by reducing SDS-PAGE.
<b>Endotoxin</b>	< 1.0 EU per µg of the protein as determined by the LAL method.
<b>Storage</b>	Generally, lyophilized proteins are stable for up to 12 months when stored at -20 to -80°C. Reconstituted protein solution can be stored at 4-8°C for 2-7 days. Aliquots of reconstituted samples are stable at < -20°C for 3 months.
<b>Shipping</b>	This product is provided as lyophilized powder which is shipped with ice packs.
<b>Formulation</b>	Lyophilized from a 0.2 µm filtered solution of PBS, pH 7.4. Normally 5 % - 8 % trehalose, mannitol and 0.01% Tween80 are added as protectants before lyophilization. Please refer to the specific buffer information in the printed manual.
<b>Reconstitution</b>	Please refer to the printed manual for detailed information.

### Data



> 95 % as determined by reducing SDS-PAGE.

### Background

Interleukin-1 receptor-like 2 is a protein that in humans is encoded by the IL1RL2 gene; belongs to the interleukin-1 receptor family. IL1RL2 is the receptor for interleukin-36 (IL36A; IL36B and IL36G). After binding to interleukin-36

### For Research Use Only

associates with the coreceptor IL1RAP to form the interleukin-36 receptor complex which mediates interleukin-36-dependent activation of NF-kappa-B; MAPK and other pathways.