

Recombinant Human IL10RB/IL10R2 Protein (Fc Tag)

Catalog No. PKSH032564

Note: Centrifuge before opening to ensure complete recovery of vial contents.

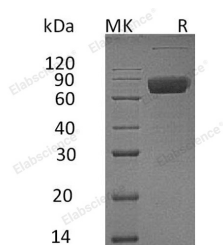
Description

Synonyms	CDW210B;CRF2-4;CRFB4;D21S58;D21S66;IL-10R2;Interleukin-10 receptor subunit beta(IL10RB);Cytokine receptor class-II member 4;Cytokine receptor family 2 member 4;Interleukin-10 receptor subunit 2
Species	Human
Expression Host	HEK293 Cells
Sequence	Met20-Ser220
Accession	Q08334
Calculated Molecular Weight	50.6 kDa
Observed molecular weight	75-95 kDa
Tag	C-Fc
Bioactivity	Not validated for activity

Properties

Purity	> 95 % as determined by reducing SDS-PAGE.
Endotoxin	< 1.0 EU per µg of the protein as determined by the LAL method.
Storage	Generally, lyophilized proteins are stable for up to 12 months when stored at -20 to -80°C. Reconstituted protein solution can be stored at 4-8°C for 2-7 days. Aliquots of reconstituted samples are stable at < -20°C for 3 months.
Shipping	This product is provided as lyophilized powder which is shipped with ice packs.
Formulation	Lyophilized from a 0.2 µm filtered solution of PBS, pH 7.4. Normally 5 % - 8 % trehalose, mannitol and 0.01% Tween80 are added as protectants before lyophilization. Please refer to the specific buffer information in the printed manual.
Reconstitution	Please refer to the printed manual for detailed information.

Data



> 95 % as determined by reducing SDS-PAGE.

Background

For Research Use Only

Interleukin-10 receptor subunit beta (IL10RB), also known as Cytokine receptor class-II member 4, Cytokine receptor family 2 member 4, Interleukin-10 receptor subunit 2, belongs to the type II cytokine receptor family. IL10RB is a single-pass type I membrane protein and contains two fibronectin type-III domains. It is an accessory chain which is essential for the active interleukin 10 receptor complex. Coexpression of IL10RB and IL10RA proteins has been shown to be required for IL10-induced signal transduction. Defects in IL10RB are the cause of inflammatory bowel disease type 25 (IBD25) which is a chronic, relapsing inflammation of the gastrointestinal tract with a complex etiology.

For Research Use Only

Toll-free: 1-888-852-8623

Web: www.elabscience.com

Tel: 1-832-243-6086

Email: techsupport@elabscience.com

Fax: 1-832-243-6017