

## Recombinant Human IL-2RB/CD122 Protein (Fc Tag)

**Catalog No.** PKSH032572

**Note:** Centrifuge before opening to ensure complete recovery of vial contents.

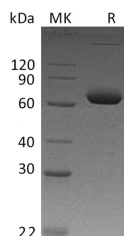
### Description

<b>Synonyms</b>	Interleukin-2 receptor subunit beta;IL2RB;IL-2 receptor subunit beta;IL-2R subunit beta;High affinity IL-2 receptor subunit beta;CD122
<b>Species</b>	Human
<b>Expression Host</b>	HEK293 Cells
<b>Sequence</b>	Ala27-Asp239
<b>Accession</b>	P14784
<b>Calculated Molecular Weight</b>	51.7 kDa
<b>Observed molecular weight</b>	60-80 kDa
<b>Tag</b>	C-Fc
<b>Bioactivity</b>	Loaded Biotinylated Human IL-2-His-Avi on SA Biosensor, can bind Human IL-2RB-Fc with an affinity constant of 12.62nM as determined in BLI assay.

### Properties

<b>Purity</b>	> 95 % as determined by reducing SDS-PAGE.
<b>Endotoxin</b>	< 1.0 EU per µg of the protein as determined by the LAL method.
<b>Storage</b>	Generally, lyophilized proteins are stable for up to 12 months when stored at -20 to -80°C. Reconstituted protein solution can be stored at 4-8°C for 2-7 days. Aliquots of reconstituted samples are stable at < -20°C for 3 months.
<b>Shipping</b>	This product is provided as lyophilized powder which is shipped with ice packs.
<b>Formulation</b>	Lyophilized from a 0.2 µm filtered solution of PBS, pH 7.4. Normally 5 % - 8 % trehalose, mannitol and 0.01% Tween80 are added as protectants before lyophilization. Please refer to the specific buffer information in the printed manual.
<b>Reconstitution</b>	Please refer to the printed manual for detailed information.

### Data



> 95 % as determined by reducing SDS-PAGE.

### Background

#### For Research Use Only

Human IL-2RB; also known as interleukin-2 receptor subunit beta; is the receptor for interleukin-2. IL2 receptor complex is involved in receptor mediated endocytosis and transduces the mitogenic signals of IL2. IL2 receptor complex has three forms with respect to ability to bind IL2. IL-2RB is belonged to a type I membrane protein; and has a 26 residue signal peptide; a 214 residue extracellular region; a 25 residue transmembrane region and a 286 residue cytoplasmic domain. IL-2RB is the subunit critical for receptor-mediated signaling via physically or functionally coupling to other signaling molecules; such as the Jak-STAT and Src-family protein tyrosine kinase although it lacks apparent catalytic motifs.