

# Recombinant Human PGRL/IGSF8 Protein (His Tag)

Catalog Number:PKSH032581



**Note:** Centrifuge before opening to ensure complete recovery of vial contents.

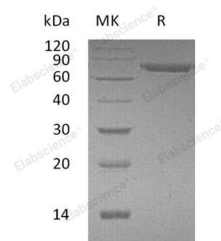
## Description

<b>Synonyms</b>	Immunoglobulin Superfamily Member 8;IGSF8;CD81 Partner 3;Glu-Trp-Ile EWI Motif-Containing Protein 2;EWI-2;Keratinocytes-Associated Transmembrane Protein 4;KCT-4;LIR-D1;Prostaglandin Regulatory-Like Protein;PGRL;CD316;IGSF8;CD81P3;EWI2;KCT4
<b>Species</b>	Human
<b>Expression Host</b>	HEK293 Cells
<b>Sequence</b>	Arg28-Thr579
<b>Accession</b>	Q969P0
<b>Calculated Molecular Weight</b>	59.6 kDa
<b>Observed molecular weight</b>	70-85 kDa
<b>Tag</b>	C-His

## Properties

<b>Purity</b>	> 95 % as determined by reducing SDS-PAGE.
<b>Endotoxin</b>	< 1.0 EU per µg of the protein as determined by the LAL method.
<b>Storage</b>	Generally, lyophilized proteins are stable for up to 12 months when stored at -20 to -80°C. Reconstituted protein solution can be stored at 4-8°C for 2-7 days. Aliquots of reconstituted samples are stable at < -20°C for 3 months.
<b>Shipping</b>	This product is provided as lyophilized powder which is shipped with ice packs.
<b>Formulation</b>	Lyophilized from a 0.2 µm filtered solution of 20mM Tris-HCl, 10% Trehalose, 150mM NaCl, 0.05% Tween80, pH8.0. Normally 5 % - 8 % trehalose, mannitol and 0.01% Tween80 are added as protectants before lyophilization. Please refer to the specific bu
<b>Reconstitution</b>	Please refer to the printed manual for detailed information.

## Data



> 95 % as determined by reducing SDS-PAGE.

## Background

Immunoglobulin Superfamily Member 8 (IGSF8) is a single-pass membrane protein. IGSF8 contains four Ig-like C2 type domains. The Ig-like C2-type domains 3 and 4 are required for interactions with CD81. IGSF8 may regulate proliferation and differentiation of keratinocytes. IGSF8 may participate in the regulation of neurite outgrowth and maintenance of the neural network in the adult brain. It also may play a role on integrin-dependent morphology and motility functions.

## For Research Use Only

A Reliable Research Partner in Life Science and Medicine

Toll-free: 1-888-852-8623

Web: [www.elabscience.com](http://www.elabscience.com)

Tel: 1-832-243-6086

Email: [techsupport@elabscience.com](mailto:techsupport@elabscience.com)

Fax: 1-832-243-6017