

Recombinant Human IMPA2/IMPase 2 Protein (His Tag)

Catalog Number:PKSH032591



Note: Centrifuge before opening to ensure complete recovery of vial contents.

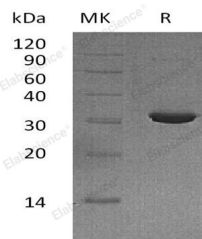
Description

| | |
|------------------------------------|--|
| Synonyms | Inositol Monophosphatase 2;IMP 2;IMPase 2;Inositol-1(or 4)-Monophosphatase 2;Myo-Inositol Monophosphatase A2;IMPA2;IMP.18P |
| Species | Human |
| Expression Host | E.coli |
| Sequence | Met 1-Lys288 |
| Accession | O14732 |
| Calculated Molecular Weight | 33.5 kDa |
| Observed molecular weight | 30 kDa |
| Tag | N-His |

Properties

| | |
|-----------------------|--|
| Purity | > 95 % as determined by reducing SDS-PAGE. |
| Endotoxin | < 1.0 EU per µg of the protein as determined by the LAL method. |
| Storage | Store at < -20°C, stable for 6 months. Please minimize freeze-thaw cycles. |
| Shipping | This product is provided as liquid. It is shipped at frozen temperature with blue ice/gel packs. Upon receipt, store it immediately at < - 20°C. |
| Formulation | Supplied as a 0.2 µm filtered solution of 20mM Tris-HCl, 2mM DTT, pH 8.0. |
| Reconstitution | Not Applicable |

Data



> 95 % as determined by reducing SDS-PAGE.

Background

Inositol monophosphatase 2, also known as Inositol-1(or 4)-monophosphatase 2, Myo-inositol monophosphatase A2 and IMPA2, is an enzyme which belongs to the inositol monophosphatase family. IMPA2 catalyzes the dephosphorylation of inositol monophosphate with cofactor Magnesium and Inhibited by high Li⁺ and restricted Mg²⁺ concentrations. IMPA2 plays an important role in phosphatidylinositol signaling. IMPA2 can use the myo-inositol monophosphates, scylloinositol 1,4-diphosphate, glucose-1-phosphate, beta-glycerophosphate, and 2'-AMP as substrates. IMPA2 is a pharmacological target for lithium Li⁽⁺⁾ action in brain, it is considered to have a role in schizophrenia and bipolar disorder.

For Research Use Only

A Reliable Research Partner in Life Science and Medicine

Toll-free: 1-888-852-8623

Web: www.elabscience.com

Tel: 1-832-243-6086

Email: techsupport@elabscience.com

Fax: 1-832-243-6017