

Recombinant Human IGF-II/IGF2 Protein

Catalog No. PKSH032596

Note: Centrifuge before opening to ensure complete recovery of vial contents.

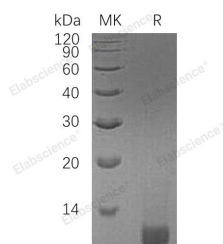
Description

Synonyms	Insulin-Like Growth Factor II;IGF-II;Somatomedin-A;IGF2;PP1446
Species	Human
Expression Host	E.coli
Sequence	Ala25-Glu91
Accession	P01344
Calculated Molecular Weight	8.3 kDa
Observed molecular weight	11 kDa
Tag	N-His

Properties

Purity	> 98 % as determined by reducing SDS-PAGE.
Endotoxin	< 0.1 EU per µg of the protein as determined by the LAL method.
Storage	Generally, lyophilized proteins are stable for up to 12 months when stored at -20 to -80°C. Reconstituted protein solution can be stored at 4-8°C for 2-7 days. Aliquots of reconstituted samples are stable at < -20°C for 3 months.
Shipping	This product is provided as lyophilized powder which is shipped with ice packs.
Formulation	Lyophilized from sterile PBS,pH 8.0. Normally 5 % - 8 % trehalose, mannitol and 0.01% Tween80 are added as protectants before lyophilization. Please refer to the specific buffer information in the printed manual.
Reconstitution	Please refer to the printed manual for detailed information.

Data



> 98 % as determined by reducing SDS-PAGE.

Background

Insulin-Like Growth Factor II (IGF2) belongs to the insulin family of polypeptide growth factors that is involved in development and growth. Members of this family are structurally homologous to proinsulin, and share higher sequence identity. IGF2 is expressed only from the paternally inherited allele and believed to be secreted by the liver and to

For Research Use Only

circulate in the blood. IGF2 possess growth-promoting activity and can stimulate the proliferation and survival of various cell types including muscle, bone, and cartilage tissue in vitro. IGF2 is influenced by placental lactogen and may play a role in fetal development.

For Research Use Only

Toll-free: 1-888-852-8623

Web: www.elabscience.com

Tel: 1-832-243-6086

Email: techsupport@elabscience.com

Fax: 1-832-243-6017