

# Recombinant Human Interferon $\gamma$ /IFNG Protein

Catalog Number:PKSH032612



**Note:** Centrifuge before opening to ensure complete recovery of vial contents.

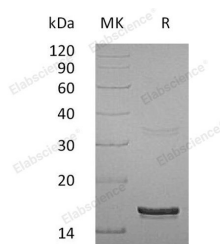
## Description

<b>Synonyms</b>	Interferon Gamma;IFN-Gamma;Immune Interferon;IFNG
<b>Species</b>	Human
<b>Expression Host</b>	E.coli
<b>Sequence</b>	Gln24-Gln166
<b>Accession</b>	P01579
<b>Calculated Molecular Weight</b>	17.7 kDa
<b>Observed molecular weight</b>	17 kDa
<b>Tag</b>	C-His

## Properties

<b>Purity</b>	> 95 % as determined by reducing SDS-PAGE.
<b>Endotoxin</b>	< 0.01 EU per $\mu$ g of the protein as determined by the LAL method.
<b>Storage</b>	Generally, lyophilized proteins are stable for up to 12 months when stored at -20 to -80°C. Reconstituted protein solution can be stored at 4-8°C for 2-7 days. Aliquots of reconstituted samples are stable at < -20°C for 3 months.
<b>Shipping</b>	This product is provided as lyophilized powder which is shipped with ice packs.
<b>Formulation</b>	Lyophilized from a 0.2 $\mu$ m filtered solution of PBS, pH 8.0. Normally 5 % - 8 % trehalose, mannitol and 0.01% Tween80 are added as protectants before lyophilization. Please refer to the specific buffer information in the printed manual.
<b>Reconstitution</b>	Please refer to the printed manual for detailed information.

## Data



> 95 % as determined by reducing SDS-PAGE.

## Background

IFN $\gamma$  is the major interferon produced by mitogenically or antigenically stimulated lymphocytes. It is structurally different from type I interferon and its major activity is immunoregulation. It has been implicated in the expression of class II histocompatibility antigens in cells that do not normally produce them; leading to autoimmune disease. Interferon gamma is produced mainly by T-cells and natural killer cells activated by antigens; mitogens; or alloantigens. It is produced by lymphocytes expressing the surface antigens CD4 and CD8. IFN $\gamma$  synthesis is induced by IL-2; FGF-basic; and EGF.

## For Research Use Only

A Reliable Research Partner in Life Science and Medicine

Toll-free: 1-888-852-8623

Web: [www.elabscience.com](http://www.elabscience.com)

Tel: 1-832-243-6086

Email: [techsupport@elabscience.com](mailto:techsupport@elabscience.com)

Fax: 1-832-243-6017